

EDF Renewables UK is looking to develop a 400MW renewable energy project, called Liddesdale, across two areas of commercial forestry within Wauchope Forest and Newcastleton Forest.

We are in the initial stages of the proposed project's development and we want to speak to local people like you about how a sustainable development project such as this could help to support the local economy and actively contribute towards Scotland's renewable energy aspirations.



01

About the project

Our project, Liddesdale wind farm consists of up to 80 turbines, powering up to 231,000* homes.

The project is at an early stage, and an Environmental Impact Assessment (EIA) Scoping Report will be submitted to the Scottish Ministers through the Energy Consents Unit in June 2023. The Scoping report identifies the likely significant environmental effects that would be considered for our project. We are also exploring battery storage and solar panels for the site.

These environmental studies would be published in an EIA Report. Feedback from the local community and other stakeholders would be published in a consultation report. Together the studies and feedback would be used to inform the design of the proposals.

We envisage an application could be submitted to the Energy Consents Unit in Summer 2024.

There will be multiple opportunities for you, the local community to view, comment and provide feedback on the project as it develops. We will keep you informed in the coming weeks of how you can view the initial proposals in a virtual village hall on the project website, ahead of in-person community engagement events later in the summer.

Find out more

Throughout the summer, members of our project team will be present at local events, and would be pleased to meet you to discuss EDF Renewables UK's activities in the region. We will be attending:

- **Border Union Show**
Friday 28 and Saturday 29 July
- **Holm Show**
Saturday 26 August

Visit our website to view the latest information as the project progresses: www.edf-re.uk/our-sites/liddesdale

You can keep in touch with our team using the dedicated project email address liddesdalewindfarm@edf-re.uk

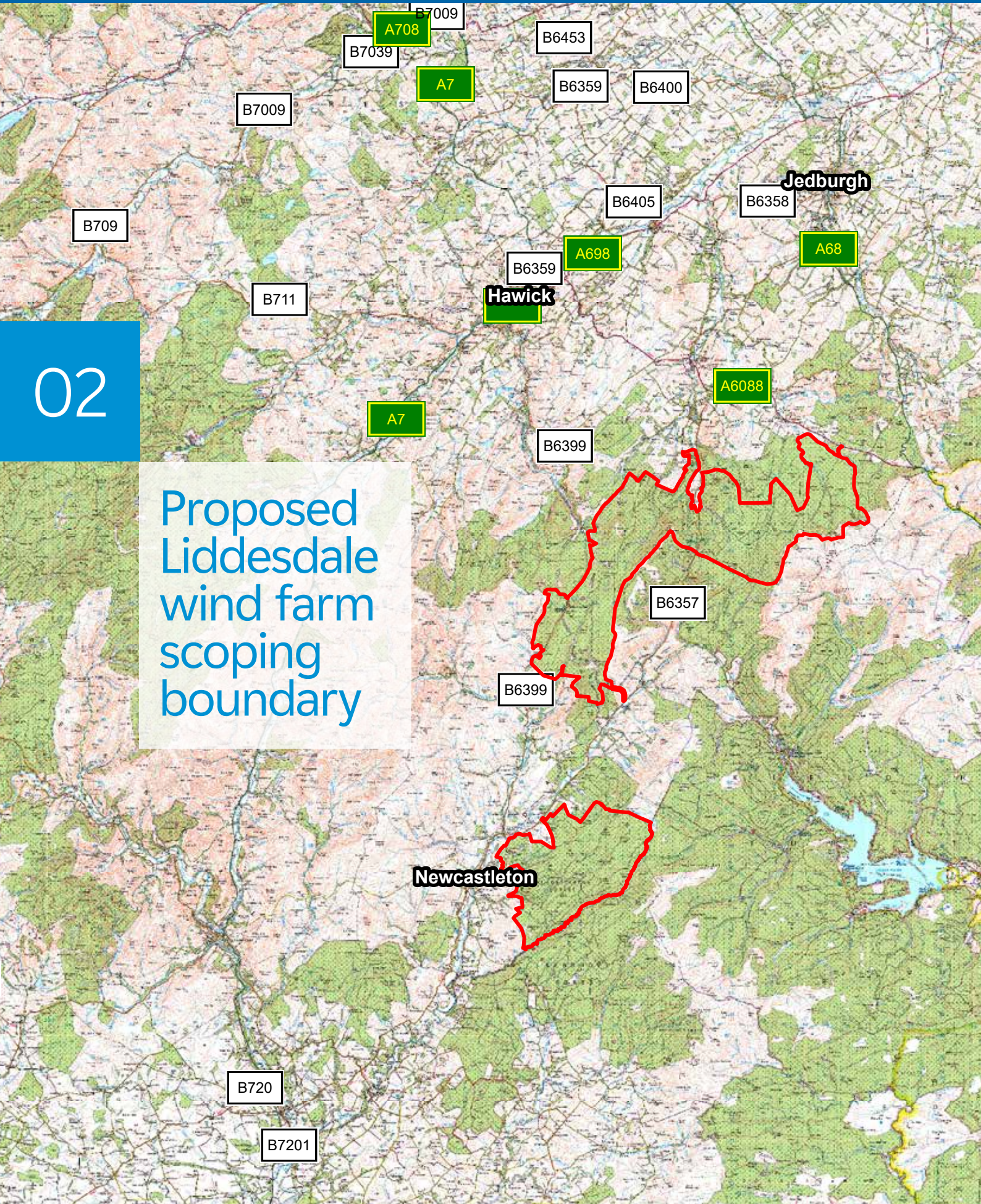
If you wish to sign up to receive updates from our team, please email us with your full name, address, email address and telephone number to provide your consent.

*Load factors based on the five year rolling averages on unchanged configuration basis using Table 6.5 of 'Digest of UK Energy Statistics' - latest figures as per July 2022 release.

Project location

02

Proposed
Liddesdale
wind farm
scoping
boundary



Working with the community

Our community consultation for Liddesdale wind farm will involve various exhibition events to display our project as it develops, as well as regular information updates to residents like you, which will come through your letterbox.

EDF Renewables UK offers a community benefit fund of £5,000 per megawatt of installed capacity for every year that the scheme is generating renewable energy, in line with Scottish Government guidance. If approved, Liddesdale wind farm would provide direct benefits to the local area through the fund as well as community investment opportunities.

Liddesdale wind farm also has the potential to provide opportunities to develop and deliver renewable energy skills and jobs in the local area, and the project team will explore opportunities for investment in skills development and using the local supply chain.



03

EDF Renewables UK

EDF Renewables UK is one of Scotland's leading renewable energy companies and has an extensive track record of developing, building, operating and maintaining renewable technologies throughout their lifetime.

In Scotland, we have 500MW of renewable energy capacity in operation from the Scottish Borders to the Highlands with a further 1.5GW in planning and development.

Our Liddesdale wind farm project team are based in Scotland and the North of England and are committed to developing Liddesdale wind farm with the local community as key project partners - providing multiple opportunities for the community to participate in, and contribute to, the development of the project.

Climate change and energy security are among the biggest challenges facing our society. Liddesdale wind farm will make a significant contribution to the Scottish Government's target to reach net zero emissions by 2045, and generate 50 per cent of Scotland's total energy demand from renewable power by 2030.


04

Keep in touch

Our project team can be contacted at any time and welcome questions, comments and feedback on the project.

 www.edf-re.uk/our-sites/liddesdale

 liddesdalewindfarm@edf-re.uk

 0131 212 5929

Sign up for project updates by contacting us at liddesdalewindfarm@edf-re.uk.