



Bloy's Grove  
Solar

# Bloy's Grove Solar Farm and Norwich Battery Storage

Community update, summer 2023




Up to 114 MW  
storage





## Update on Bloy's Grove Solar Farm


Since receiving planning permission from South Norfolk District Council in August 2022 we have been progressing our plans to build our 49.9 MW Bloy's Grove Solar Farm. We last wrote to you in November 2022 and are pleased to bring you this further update on progress.

### Bloy's Grove Solar Farm – key facts

 49.9 MW

 A saving of around 21,500 tonnes\* of carbon dioxide emissions each year

 Community benefit fund of £20,000 per year paid annually for the 35-year lifetime of the project

 Grid connection underground to Norwich Substation

 Community orchard and other biodiversity improvements

 EDF Renewables UK intend to build, own and operate the solar farm for the lifetime of the project

\* Based on BEIS's 'all fossil fuels' emissions statistic of 450 tonnes of carbon dioxide per GWh of electricity supplied in the Digest of UK Energy Statistics \*published July 2019, p96).



49 MW solar  
powering 9,652 homes



# Construction Traffic Management Plan

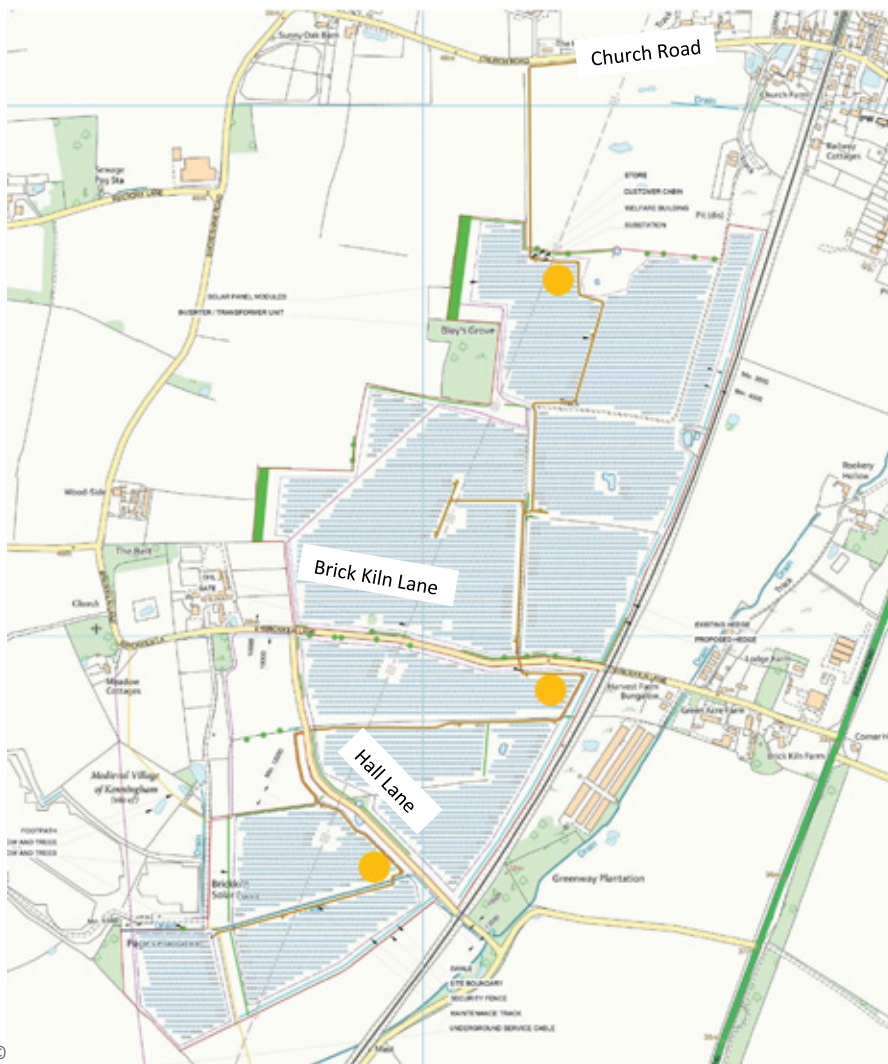
Following the advice of an independent traffic consultant, our options for transporting the solar panels to site are limited to Church Road. This was the access route submitted in the consented planning application. An alternative route using Brick Kiln Lane was considered, however HGVs would not be able to pass safely underneath the low bridge on Brick Kiln Lane. We have been working on a plan to minimise any traffic disruption, and we now invite you to take a look at the draft Construction Traffic Management Plan (CTMP) on the Bloy's Grove website.

Safety to all road users is of paramount importance, as is minimising the inconvenience of additional traffic coming through Swainsthorpe village. We are in the process of agreeing the CTMP with the local authority.

## Our commitments:

- Construction traffic may only access the site between the hours of 07:00 to 19:00 on Mondays to Fridays or 07:00 to 14:00 on Saturdays

- HGV deliveries will be restricted to off-peak times: considered to be between 09:00 and 15:00
- No vehicle movements or works will be scheduled for Sundays or Bank Holidays
- Clear signage will be displayed on affected routes
- A construction manager will be available at all times and their contact name and phone number will be shared before construction begins
- After discussions and a traffic route walkover with Swainsthorpe Parish Council a single additional passing place will be temporarily installed and then removed following construction
- We are exploring the use of a shuttle bus service which will bring construction personnel to site from Dunston Hall, or other suitable location, to avoid workers having to drive to site therefore reducing the number of vehicles on Church Road during the construction period.



Temporary construction compound



Site track



## Community Liaison Group

We will set up a Community Liaison Group for Bloy's Grove made up of local representatives to share information. The forum will provide an opportunity for community feedback. The first meeting is expected to take place shortly before construction begins.



# Planning conditions

The planning consent for Bloy's Grove Solar Farm came with pre-commencement planning conditions. We have been working with our environmental consultants to fulfil our obligations and meet the requirements of the Council and will shortly submit discharge condition reports for noise & dust, archaeology and arboriculture (trees).

**Noise & dust** – A Construction Noise and Dust Management Plan (CNDMP) is designed to minimise and control noise and dust generation during the construction of the Bloy's Grove Solar Farm. The plan covers:

- Communication with neighbours before and during works
- How residents can raise any concerns and issues
- Measures to control dust from excavation, stockpiles and vehicles

**Archaeology** - Trial trenching at the Bloy's Grove site has been completed. Nothing significant was found.

**Arboriculture** – A Tree Protection Plan will detail tree protection measures and long-term tree retention on site.

# Environmental studies

As part of the cable route application, South Norfolk District Council has asked us to study the existing air quality, noise levels and levels of land contamination along the A140, where the cable route is proposed, in order to assess the potential impact on the small number of dwellings along that section of the A140. We have agreed to undertake studies into these areas. The studies will examine the site of the old petrol filling station along the cable route in particular, in relation to potential land contamination. This will provide the district council with valuable information about the area.

## Biodiversity

In accordance with the planning consent we are preparing the plans to safeguard the environment during construction and benefit nature into operation. These documents will be submitted to the council for approval. A tree specialist is collaborating with an ecologist to select the hedge and tree species, grass and wildflower mixes to be planted around the site. Within the orchard it is currently planned to have a mix of apple, pear and cherry trees.

# Cable route

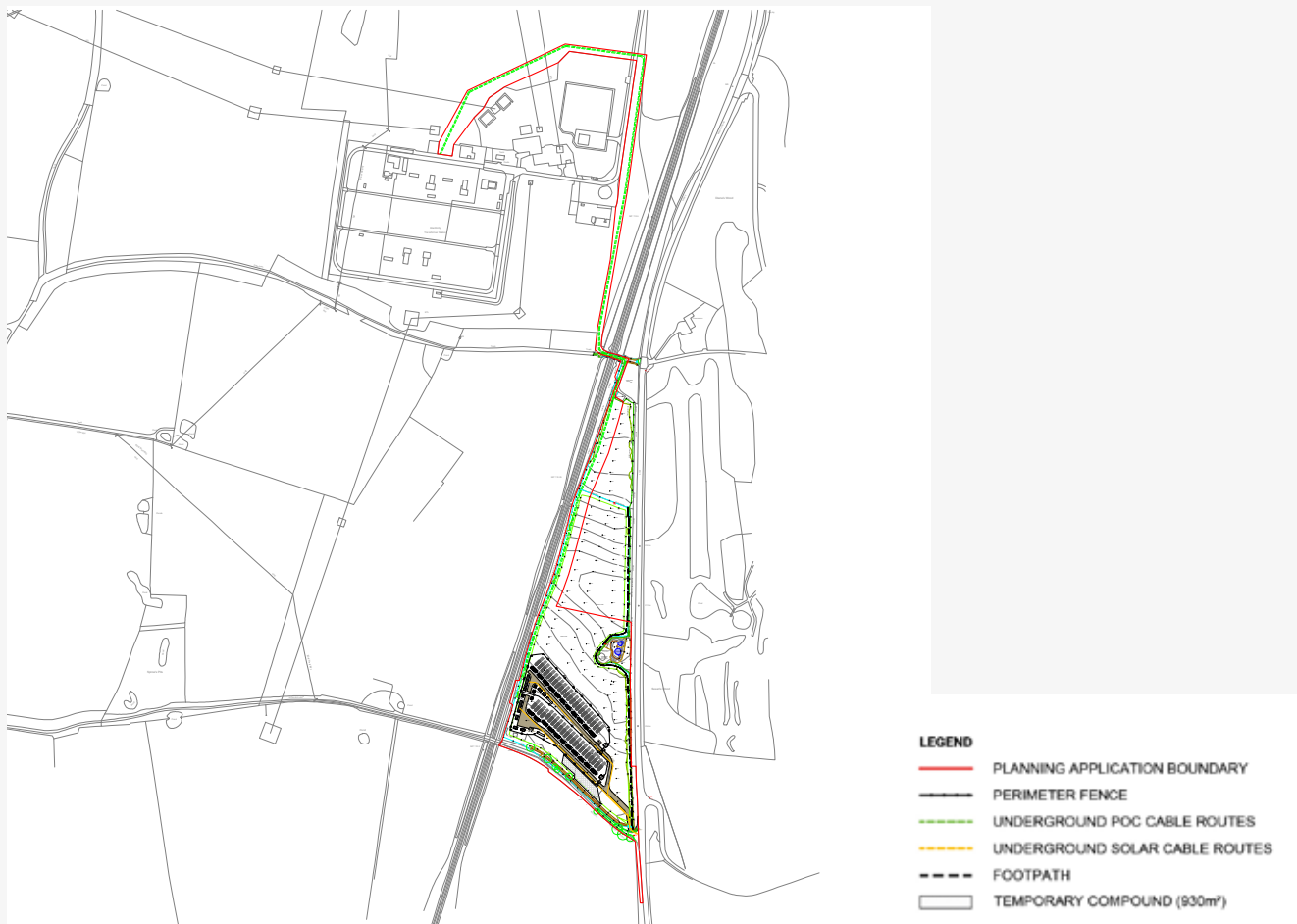
In December 2022 EDF Renewables UK submitted a cable route application to South Norfolk District Council with details of how Bloy's Grove Solar Farm will connect to Norwich Substation.

There are no plans for overhead cabling. The connection will be made via underground cabling. The cables will follow Brick Kiln Lane and the A140 Ipswich Road, then use the bridge over the railway line to connect to the substation.

South Norfolk District Council's consultation on the application concluded in January 2023. A decision is expected in summer 2023.



# Update on Norwich Battery Storage



Late last year we consulted on our plans for a battery energy storage facility to the north of Hickling Lane, and we submitted our planning application to South Norfolk District Council earlier this year. The district council undertook its own consultation which concluded in April. A decision is expected in the summer.

We will be back in touch over the summer to provide an update on next steps, should our plans receive approval.

As part of the fight against climate change, the UK Government has a target of cutting carbon emissions to net zero by 2050. We need to reduce our consumption of fossil fuels and increase renewable and low carbon energy generation. Solar generation plays an important part in the UK energy mix, and the planning system supports the transition to a low carbon future.

## About EDF Renewables UK

EDF Renewables UK and Ireland ([www.edf-re.uk](http://www.edf-re.uk)) is a subsidiary of EDF Group's, one of the world's largest low carbon electricity companies, and our investment and innovation is reducing costs for consumers and bringing significant benefits for communities. With our operating portfolio of 41 renewable energy sites including battery, onshore and offshore wind (together totalling more than 1 GW) we are providing much needed affordable, low carbon electricity. We have an expanding portfolio with almost 5 GW of projects in planning and development, including wind, battery and solar PV. Find out more at [www.edf-re.uk](http://www.edf-re.uk)

[www.edf-re.uk/our-sites/bloys-grove](http://www.edf-re.uk/our-sites/bloys-grove)

## Contact us:

[bloys.grove@edf-re.uk](mailto:bloys.grove@edf-re.uk)  
01508 500346