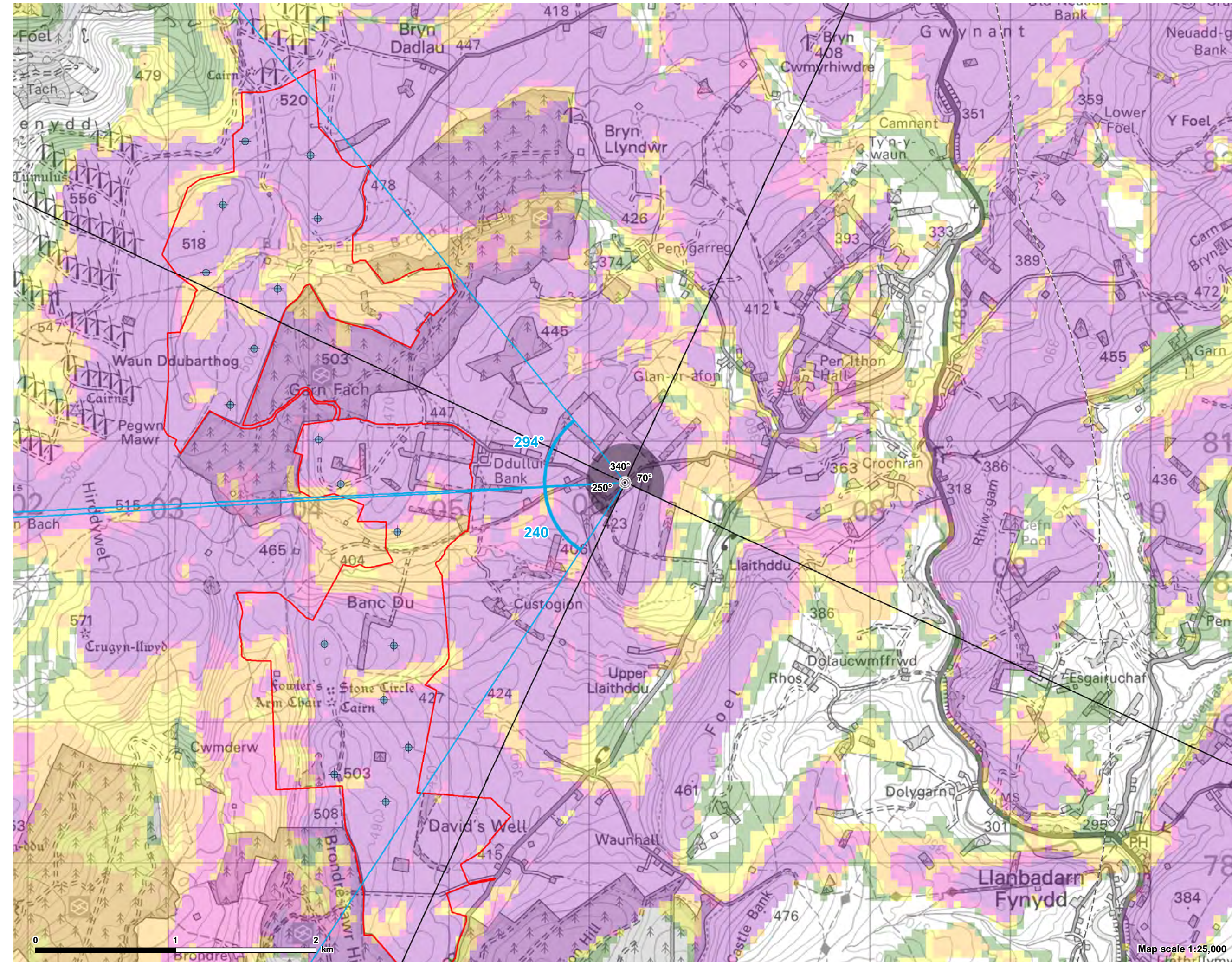


Contains Ordnance Survey data © Crown copyright and database right 2021



© Crown copyright and database rights 2021 Ordnance Survey 0100031673

CB:XX EB:Packham\_B LUC:SNH\_Template\_Double\_A3L\_DDP 17/05/2021 Source:

Garn Fach Wind Farm LVIA



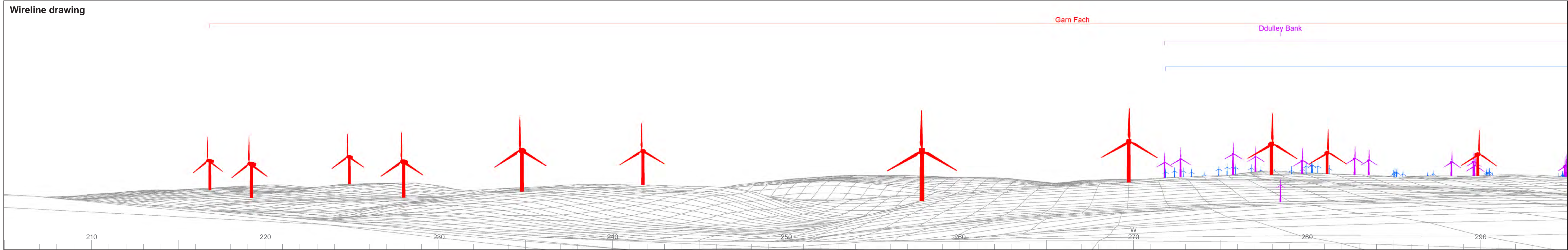
Figure 6-25a: VP5  
Minor Road near Ddullu Bank

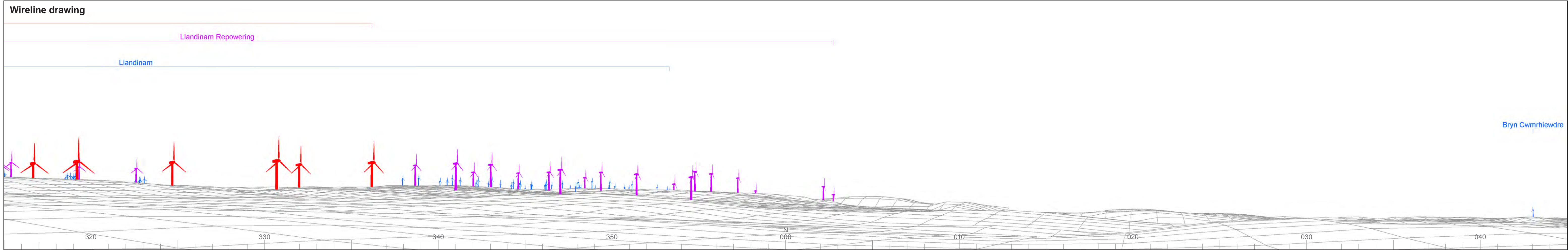
- Turbine location
- Site boundary
- Viewpoint
- 5km intervals from outermost turbines
- 45km from outermost turbines
- Zone of Theoretical Visibility**
- 1-4 Turbines are visible
- 5-8 Turbines are visible
- 9-12 Turbines are visible
- 13-15 Turbines are visible
- 16-17 Turbines are visible
- 53.5° Field of View
- 90° Field of View

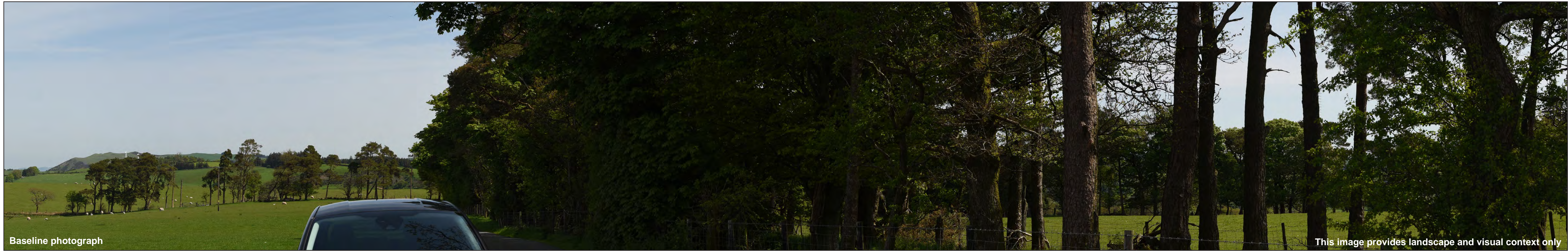
**Note**  
The ZTV is calculated to turbine tip height (149.9m) from a viewing height of 2m above ground level. The terrain model assumes bare ground and is derived from OS Terrain 50 height data (obtained from Ordnance Survey in July 2019).

Earth curvature and atmospheric refraction have been taken into account. The ZTV was calculated using ArcMap 10.5.1 software.



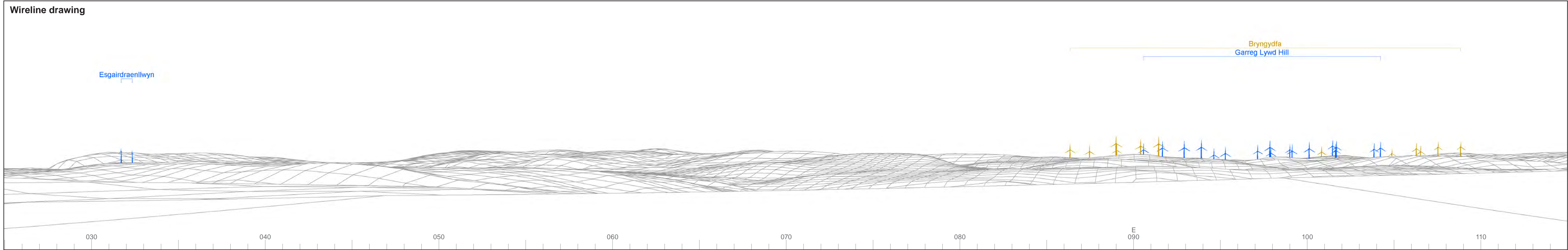






Baseline photograph

This image provides landscape and visual context only



OS reference: 306254E 280707N  
 AOD: 416m  
 Direction of view: 70°  
 Nearest turbine: 1.7 km

Horizontal field of view: 90° (cylindrical projection)  
 Principal distance: 522 mm  
 Paper size: 841 x 297 mm (half A1)  
 Correct printed image size: 820 x 260 mm

Camera: Nikon D750  
 Lens: 50mm Fixed Focal Length  
 Camera height: 1.5m

Photography Date: 17/05/2018  
 Photography Time: 11.51am

Wind Farm Developments key  
 (by status):

Proposed scheme  
 Operational  
 Under construction  
 Consented  
 Application  
 Appeal/PLI

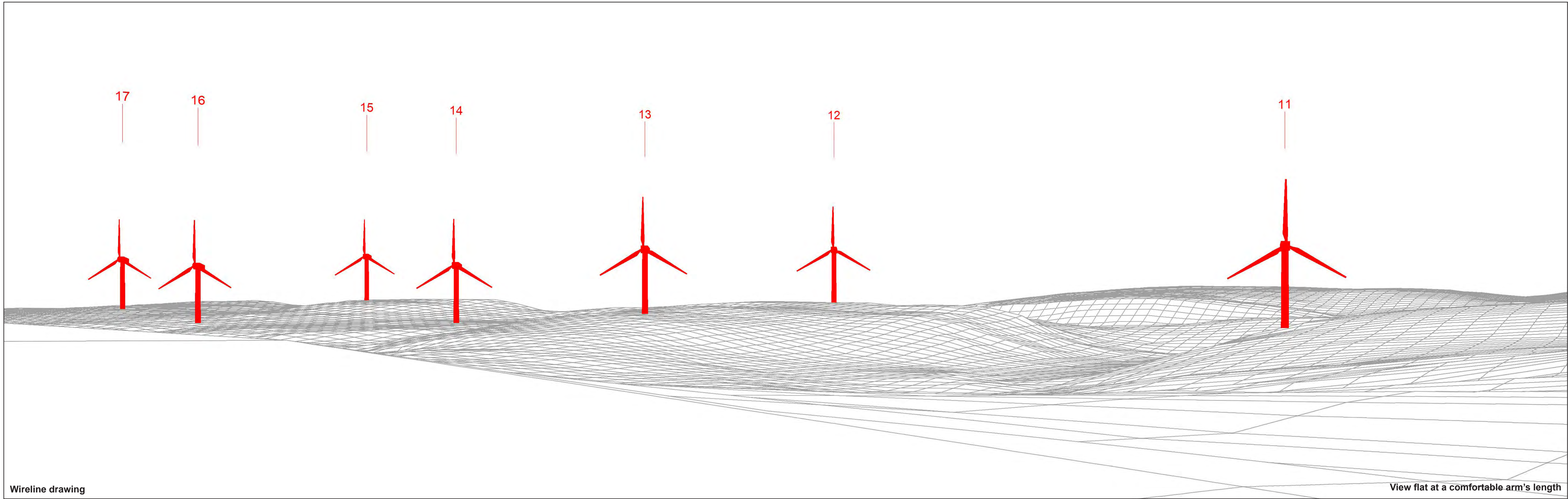
Garn Fach

Figure: 6-25d

Viewpoint 5: Minor Road near Ddullui Bank

© Crown copyright and database rights 2021. Ordnance Survey data. Licence number: 0100051673

© Crown copyright and database rights 2021 Ordnance Survey data Licence number: 0100051673



Wireline drawing

View flat at a comfortable arm's length



OS reference: 306254E 280707N  
AOD: 416m  
Direction of view: 240°  
Nearest turbine: 1.7 km

Horizontal field of view: 53.5° (planar projection)  
Principal distance: 812.5 mm  
Paper size: 841 x 297 mm (half A1)  
Correct printed image size: 820 x 260 mm

Wind Farm Developments key (by status): Proposed scheme Operational

Garn Fach  
Figure: 6-25e  
Viewpoint 5: Minor Road near Ddullui Bank



Photomontage

View flat at a comfortable arm's length



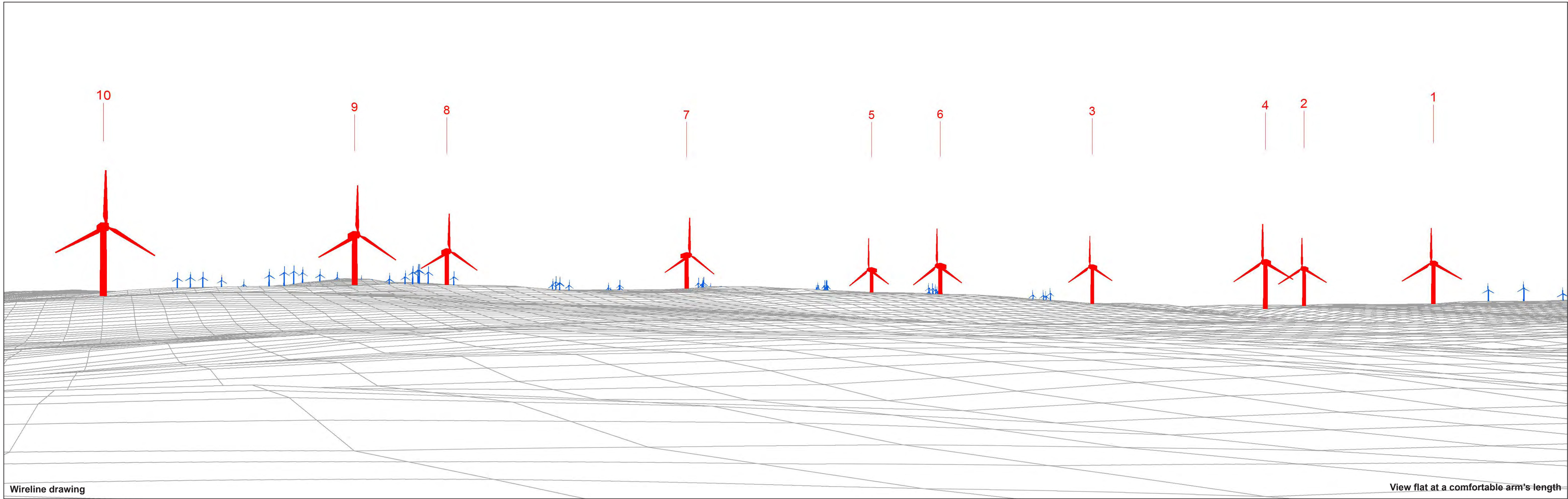
OS reference: 306254E 280707N  
AOD: 416m  
Direction of view: 240°  
Nearest turbine: 1.7 km

Horizontal field of view: 53.5° (planar projection)  
Principal distance: 812.5 mm  
Paper size: 841 x 297 mm (half A1)  
Correct printed image size: 820 x 260 mm

Camera: Nikon D750  
Lens: 50mm Fixed Focal Length  
Camera height: 1.5m

Photography Date: 17/05/2018  
Photography Time: 11.51am

Garn Fach  
Figure: 6-25f  
Viewpoint 5: Minor Road near Ddullui Bank



Wireline drawing

View flat at a comfortable arm's length



OS reference: 306254E 280707N  
 AOD: 416m  
 Direction of view: 293.5°  
 Nearest turbine: 1.7 km

Horizontal field of view: 53.5° (planar projection)  
 Principal distance: 812.5 mm  
 Paper size: 841 x 297 mm (half A1)  
 Correct printed image size: 820 x 260 mm

Wind Farm Developments key (by status): Proposed scheme Operational

Garn Fach  
 Figure: 6-25g  
 Viewpoint 5: Minor Road near Ddullui Bank

© Crown copyright and database rights 2021 Ordnance Survey data Licence number: 0100051673



Photomontage

View flat at a comfortable arm's length



OS reference: 306254E 280707N  
AOD: 416m  
Direction of view: 293.5°  
Nearest turbine: 1.7 km

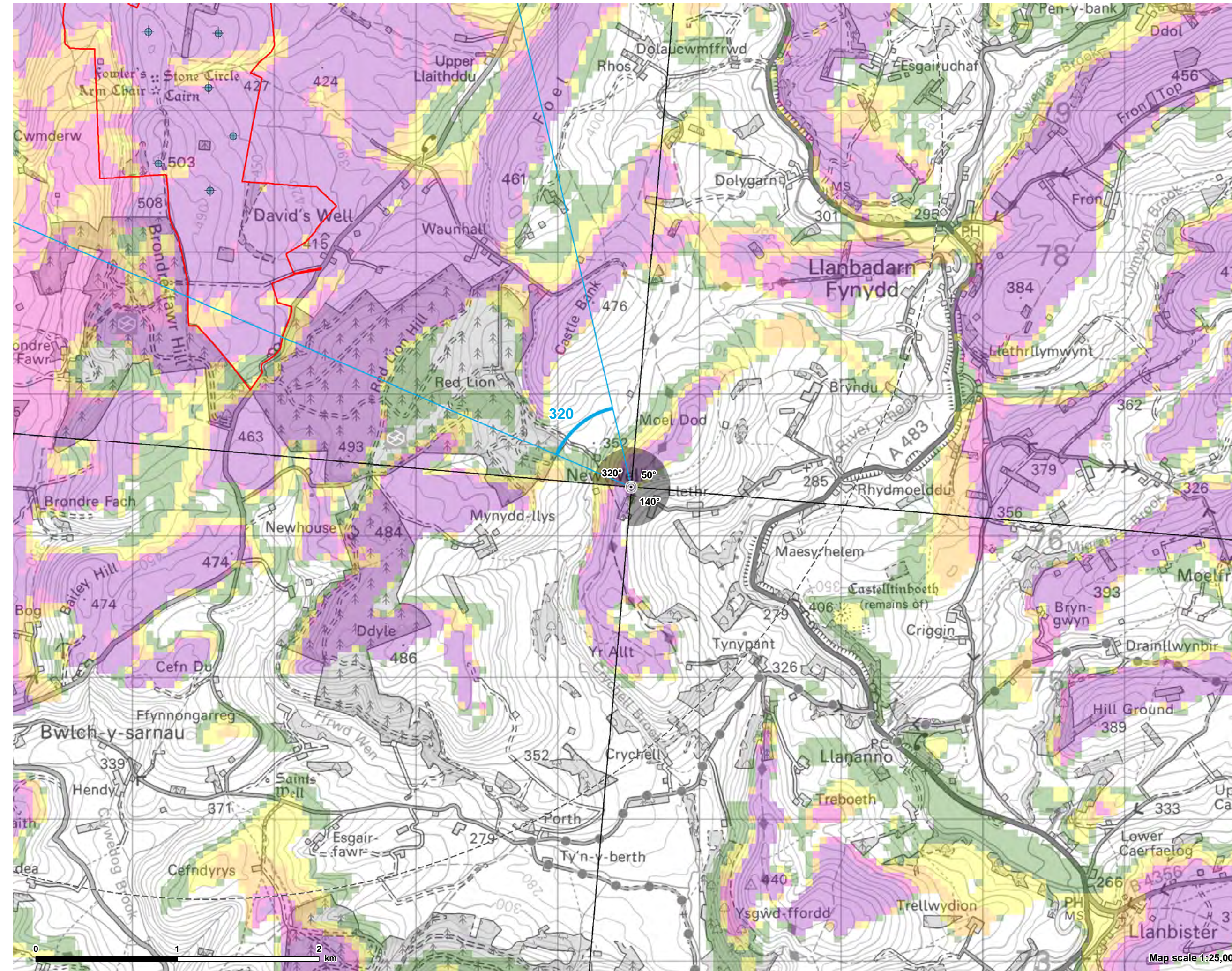
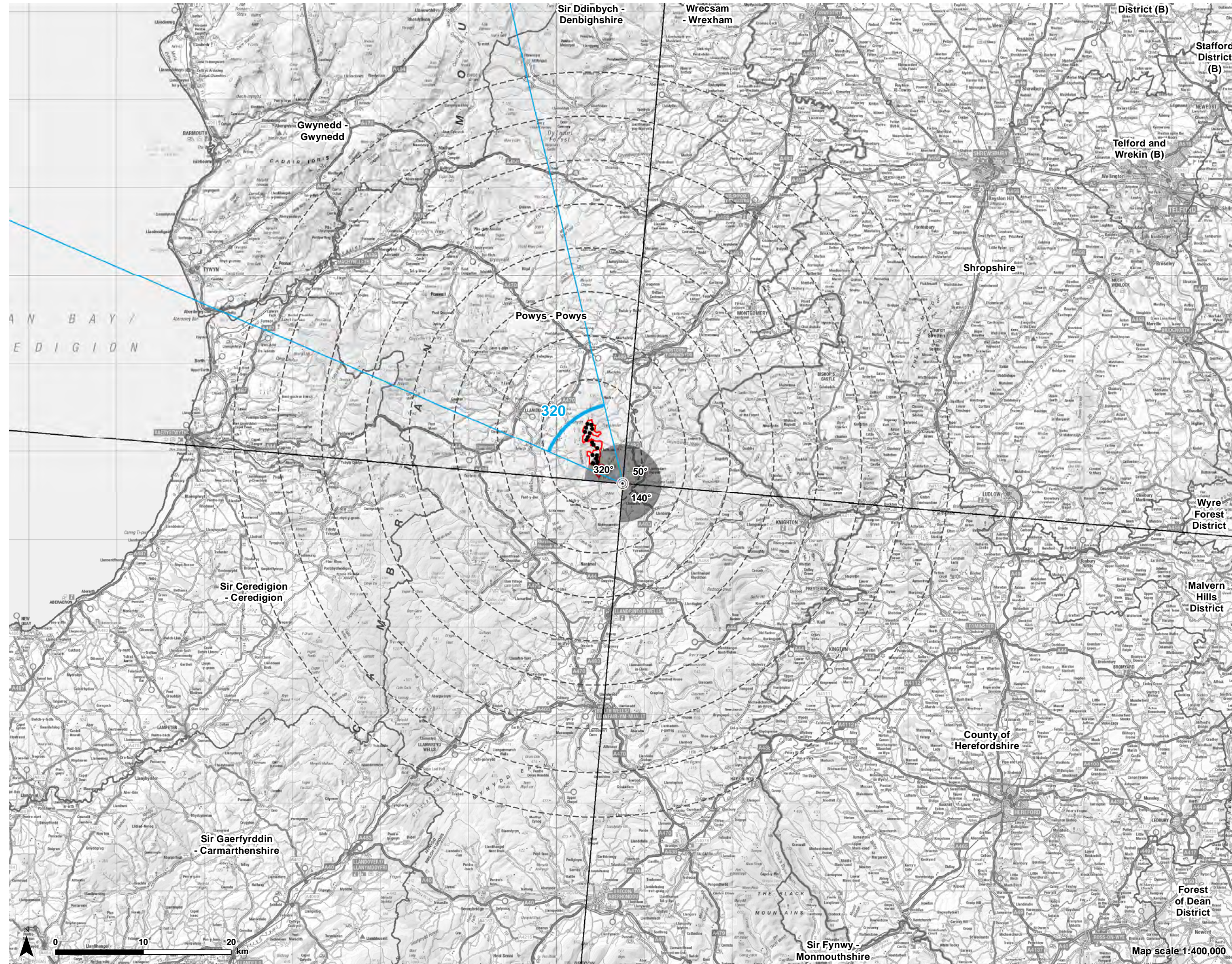
Horizontal field of view: 53.5° (planar projection)  
Principal distance: 812.5 mm  
Paper size: 841 x 297 mm (half A1)  
Correct printed image size: 820 x 260 mm

Camera: Nikon D750  
Lens: 50mm Fixed Focal Length  
Camera height: 1.5m

Photography Date: 17/05/2018  
Photography Time: 11.51am

Garn Fach  
Figure: 6-25h  
Viewpoint 5: Minor Road near Ddullui Bank





Garn Fach Wind Farm LVIA



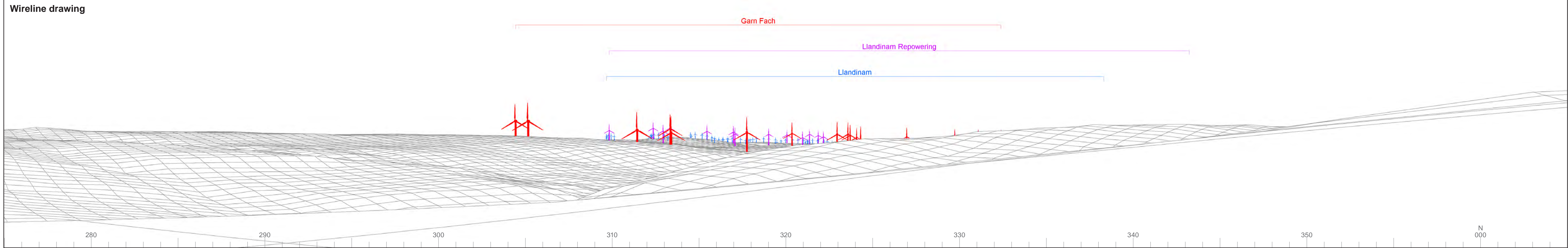
Figure 6-26a: VP6  
Glyndŵr's Way at Upper Lethr

- Turbine location
- Site boundary
- Viewpoint
- 5km intervals from outermost turbines
- 45km from outermost turbines
- Zone of Theoretical Visibility**
- 1-4 Turbines are visible
- 5-8 Turbines are visible
- 9-12 Turbines are visible
- 13-15 Turbines are visible
- 16-17 Turbines are visible
- 53.5° Field of View
- 90° Field of View

**Note**  
The ZTV is calculated to turbine tip height (149.9m) from a viewing height of 2m above ground level. The terrain model assumes bare ground and is derived from OS Terrain 50 height data (obtained from Ordnance Survey in July 2019).

Earth curvature and atmospheric refraction have been taken into account. The ZTV was calculated using ArcMap 10.5.1 software.





© Crown copyright and database rights 2021. Ordnance Survey data. Licence number: 0100051673



OS reference: 307518E 276343N  
 AOD: 431m  
 Direction of view: 320°  
 Nearest turbine: 3.6 km

Horizontal field of view: 90° (cylindrical projection)  
 Principal distance: 522 mm  
 Paper size: 841 x 297 mm (half A1)  
 Correct printed image size: 820 x 260 mm

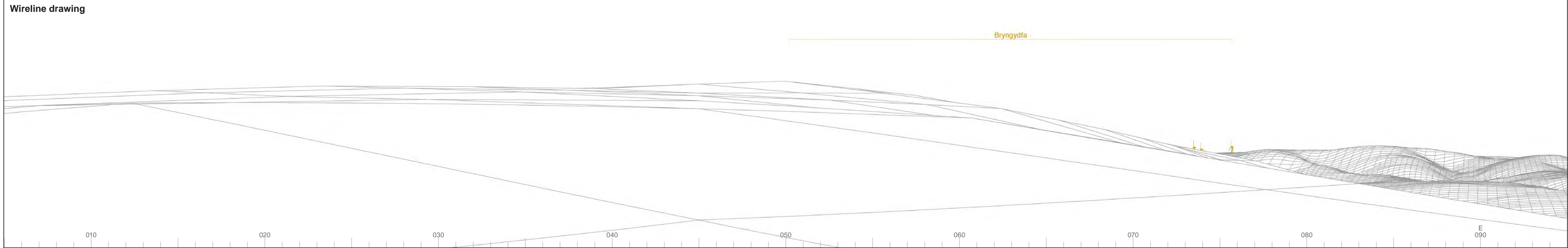
Camera: Nikon D750  
 Lens: 50mm Fixed Focal Length  
 Camera height: 1.5m

Photography Date: 04/11/2020  
 Photography Time: 13.04pm

Wind Farm Developments key  
 (by status):

Proposed scheme  
 Operational  
 Under construction  
 Consented  
 Application  
 Appeal/PLI

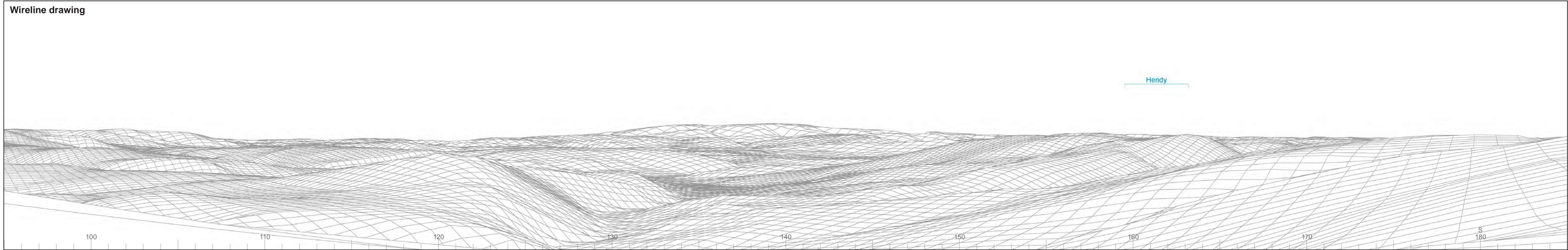
Garn Fach  
**Figure: 6-26b**  
 Viewpoint 6: Glyndŵr's Way at Upper Lethr





Baseline photograph

This image provides landscape and visual context only



OS reference: 307518E 276343N  
 AOD: 431m  
 Direction of view: 140°  
 Nearest turbine: 3.6 km

Horizontal field of view: 90° (cylindrical projection)  
 Principal distance: 522 mm  
 Paper size: 841 x 297 mm (half A1)  
 Correct printed image size: 820 x 260 mm

Camera: Nikon D750  
 Lens: 50mm Fixed Focal Length  
 Camera height: 1.5m

Photography Date: 04/11/2020  
 Photography Time: 13.04pm

Wind Farm Developments key (by status):  
 Proposed scheme  
 Operational  
 Under construction  
 Consented  
 Application  
 Appeal/PLI

Garn Fach  
**Figure: 6-26d**  
 Viewpoint 6: Glyndŵr's Way at Upper Lethr

© Crown copyright and database rights 2021. Ordnance Survey data. Licence number: 0100051673

15 17

16

12 14

13

8

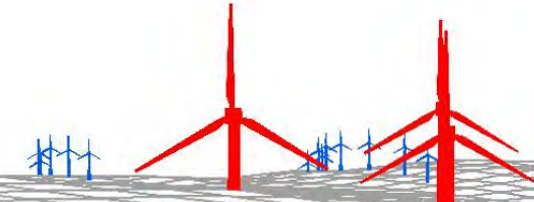
10 9 7 5 11

3 6

2

4

1



© Crown copyright and database rights 2021 Ordnance Survey data Licence number: 0100051673

Wireline drawing

View flat at a comfortable arm's length



OS reference: 307518E 276343N  
AOD: 431m  
Direction of view: 320°  
Nearest turbine: 3.6 km

Horizontal field of view: 53.5° (planar projection)  
Principal distance: 812.5 mm  
Paper size: 841 x 297 mm (half A1)  
Correct printed image size: 820 x 260 mm

Wind Farm Developments key (by status): Proposed scheme Operational

Garn Fach  
Figure: 6-26e  
Viewpoint 6: Glyndŵr's Way at Upper Lethr



Photomontage

View flat at a comfortable arm's length



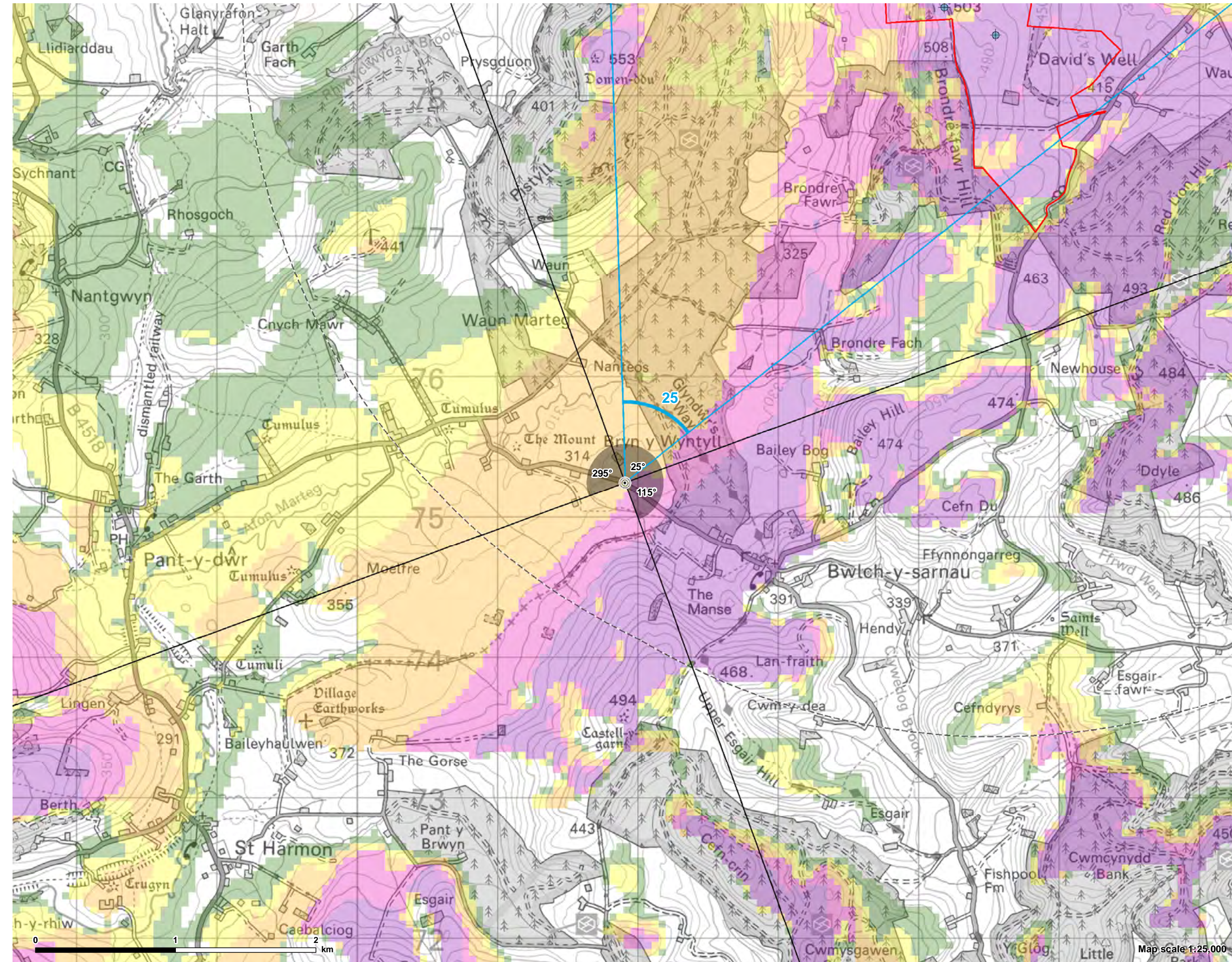
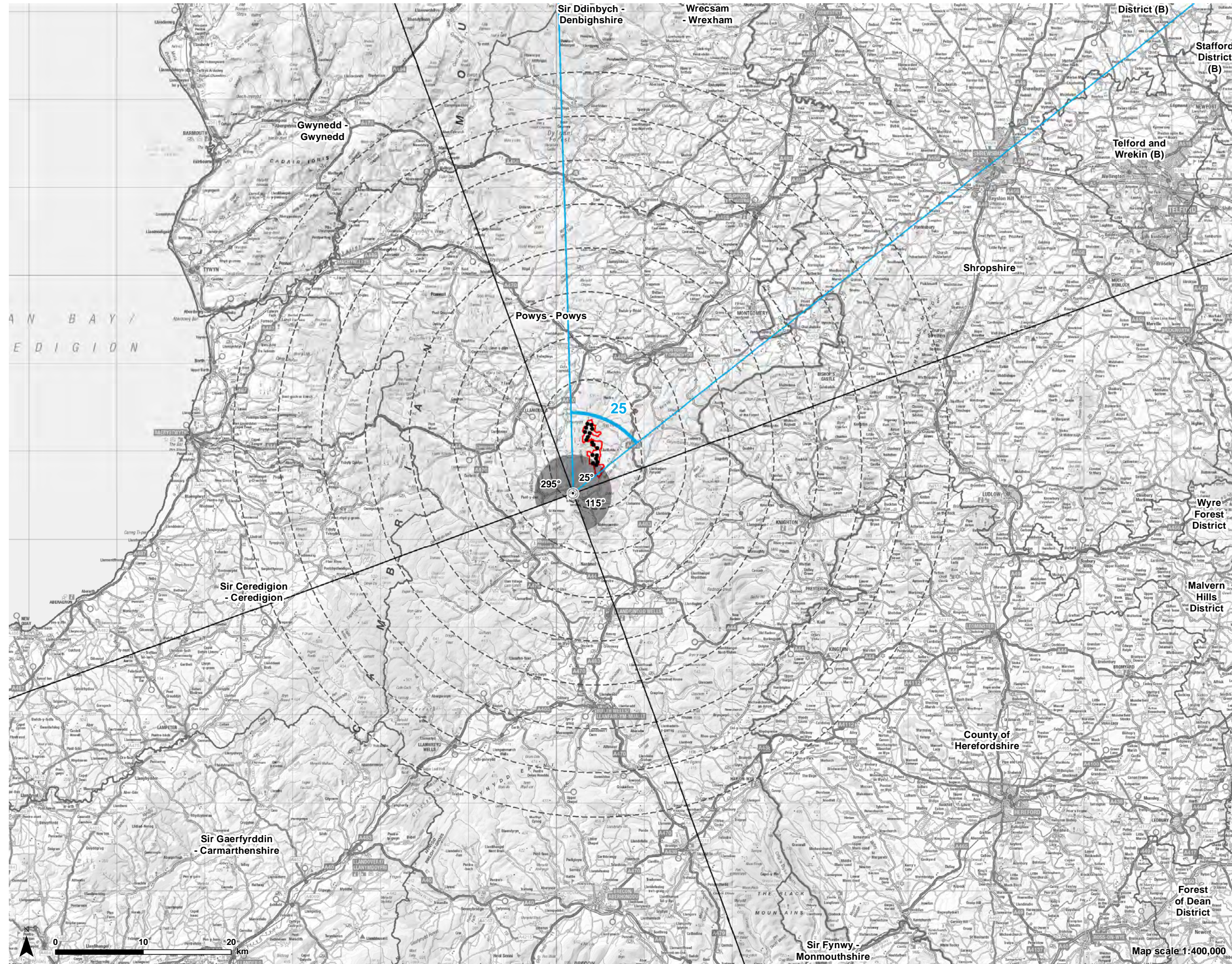
OS reference: 307518E 276343N  
AOD: 431m  
Direction of view: 320°  
Nearest turbine: 3.6 km

Horizontal field of view: 53.5° (planar projection)  
Principal distance: 812.5 mm  
Paper size: 841 x 297 mm (half A1)  
Correct printed image size: 820 x 260 mm

Camera: Nikon D750  
Lens: 50mm Fixed Focal Length  
Camera height: 1.5m

Photography Date: 04/11/2020  
Photography Time: 13.04pm

Garn Fach  
Figure: 6-26f  
Viewpoint 6: Glyndŵr's Way at Upper Lethr



Garth Fach Wind Farm LVIA



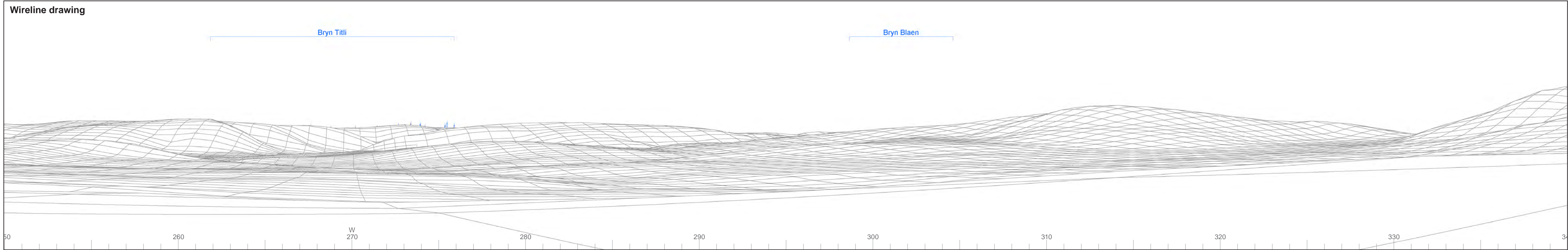
Figure 6-27a: VP7  
Minor Road West of Bwlch-y-Sarnau

- Turbine location
- Site boundary
- Viewpoint
- 5km intervals from outermost turbines
- 45km from outermost turbines
- Zone of Theoretical Visibility**
- 1-4 Turbines are visible
- 5-8 Turbines are visible
- 9-12 Turbines are visible
- 13-15 Turbines are visible
- 16-17 Turbines are visible
- 53.5° Field of View
- 90° Field of View

**Note**  
The ZTV is calculated to turbine tip height (149.9m) from a viewing height of 2m above ground level. The terrain model assumes bare ground and is derived from OS Terrain 50 height data (obtained from Ordnance Survey in July 2019).

Earth curvature and atmospheric refraction have been taken into account. The ZTV was calculated using ArcMap 10.5.1 software.





**LUC**

OS reference: 301907E 275245N  
 AOD: 337m  
 Direction of view: 295°  
 Nearest turbine: 4.1 km

Horizontal field of view: 90° (cylindrical projection)  
 Principal distance: 522 mm  
 Paper size: 841 x 297 mm (half A1)  
 Correct printed image size: 820 x 260 mm

Camera: Nikon D750  
 Lens: 50mm Fixed Focal Length  
 Camera height: 1.5m

Photography Date: 17/05/2018  
 Photography Time: 13.29pm

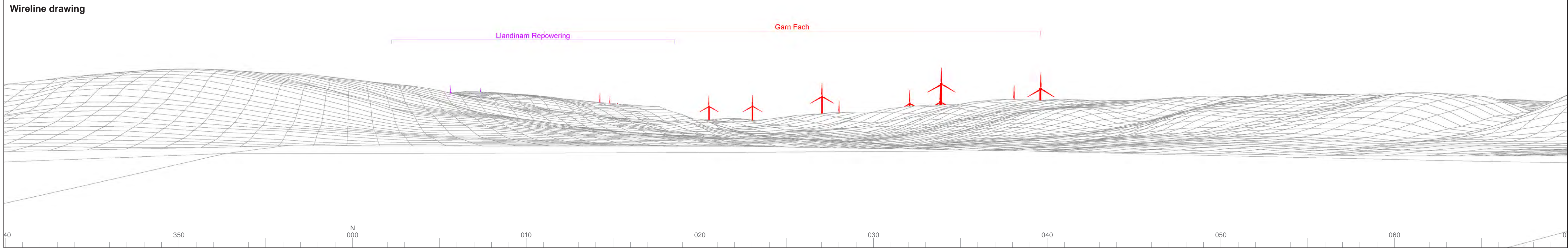
Wind Farm Developments key (by status):

Proposed scheme  
 Operational  
 Under construction  
 Consented  
 Application  
 Appeal/PLI

Garn Fach  
**Figure: 6-27b**  
 Viewpoint 7: Minor Road West of Bwlch-y-Sarnau

© Crown copyright and database rights 2021. Ordnance Survey data. Licence number: 0100051673





OS reference: 301907E 275245N  
 AOD: 337m  
 Direction of view: 25°  
 Nearest turbine: 4.1 km

Horizontal field of view: 90° (cylindrical projection)  
 Principal distance: 522 mm  
 Paper size: 841 x 297 mm (half A1)  
 Correct printed image size: 820 x 260 mm

Camera: Nikon D750  
 Lens: 50mm Fixed Focal Length  
 Camera height: 1.5m

Photography Date: 17/05/2018  
 Photography Time: 13.29pm

Wind Farm Developments key  
 (by status):

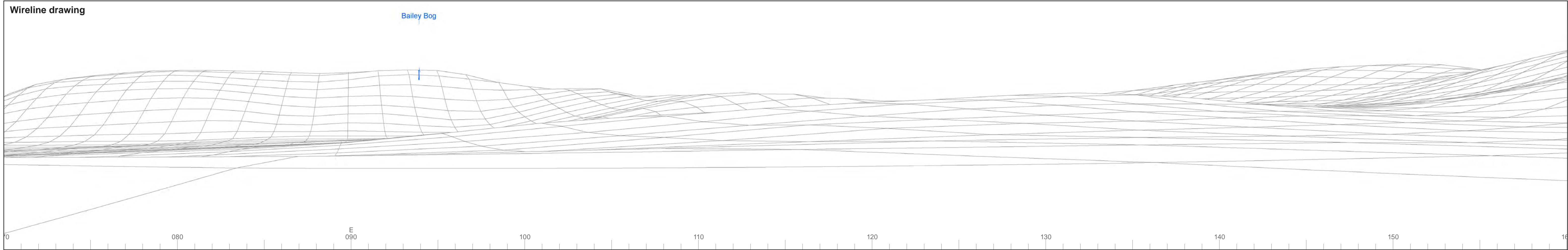
Proposed scheme  
 Operational  
 Under construction  
 Consented  
 Application  
 Appeal/PLI

© Crown copyright and database rights 2021. Ordnance Survey data. Licence number: 0100051673



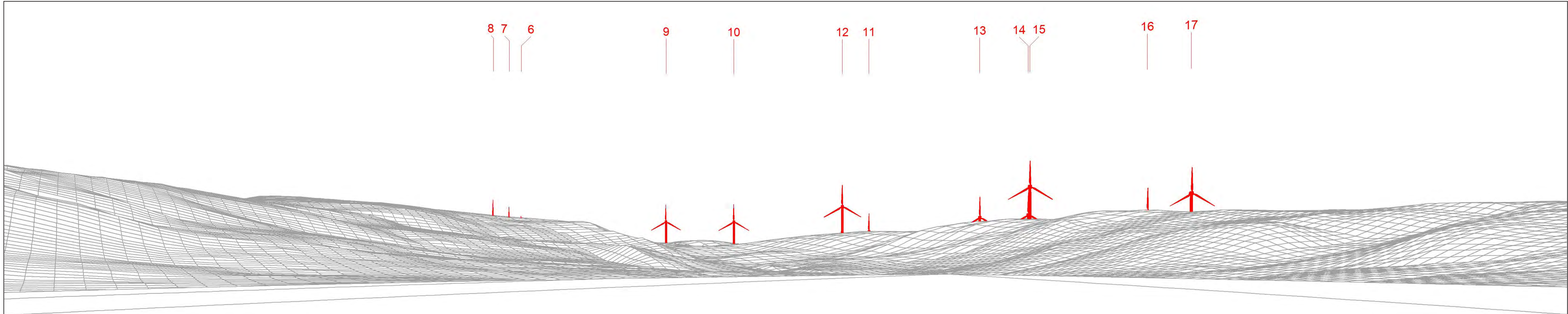
Baseline photograph

This image provides landscape and visual context only



Wireline drawing

Bailey Bog



Wireline drawing

View flat at a comfortable arm's length



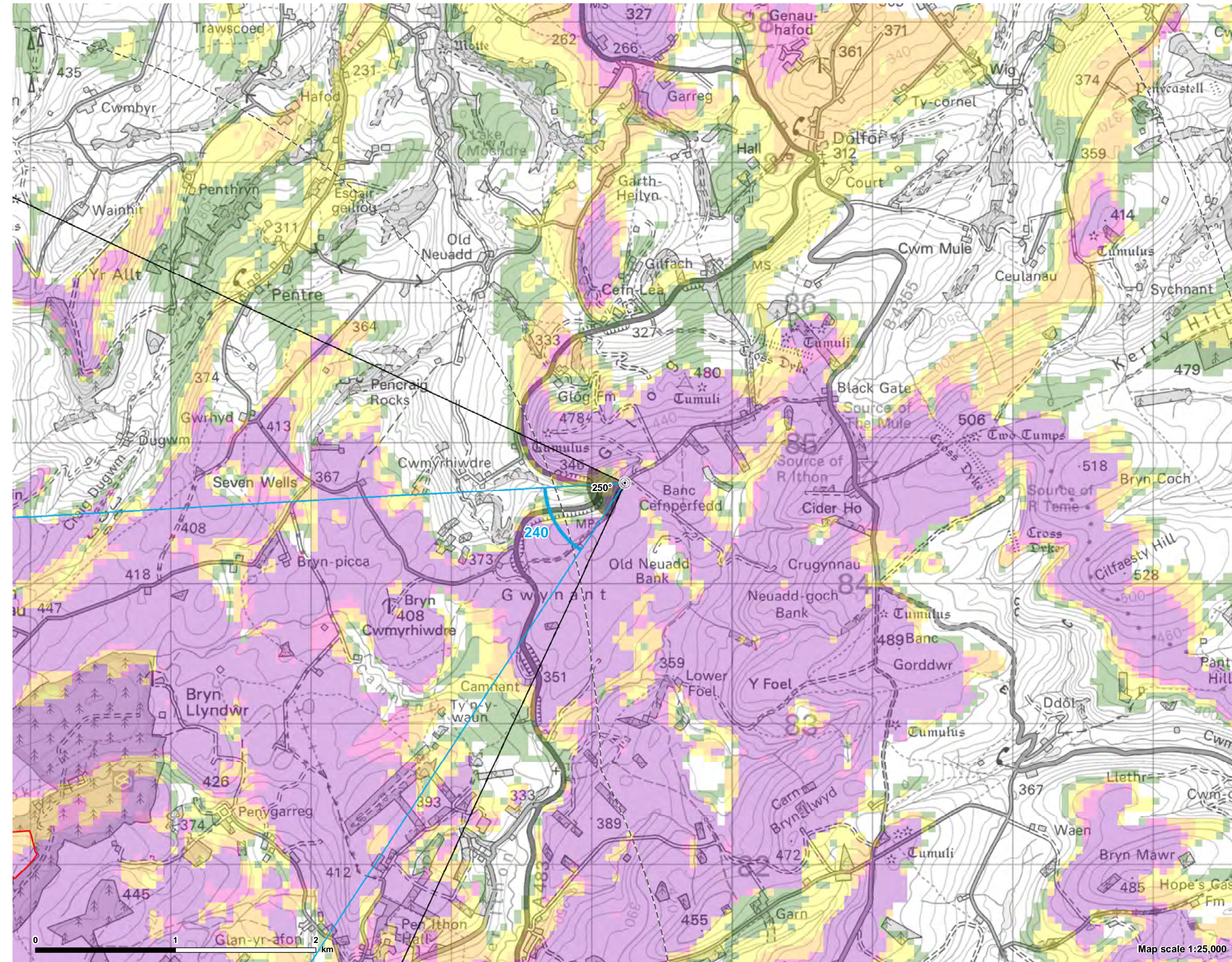
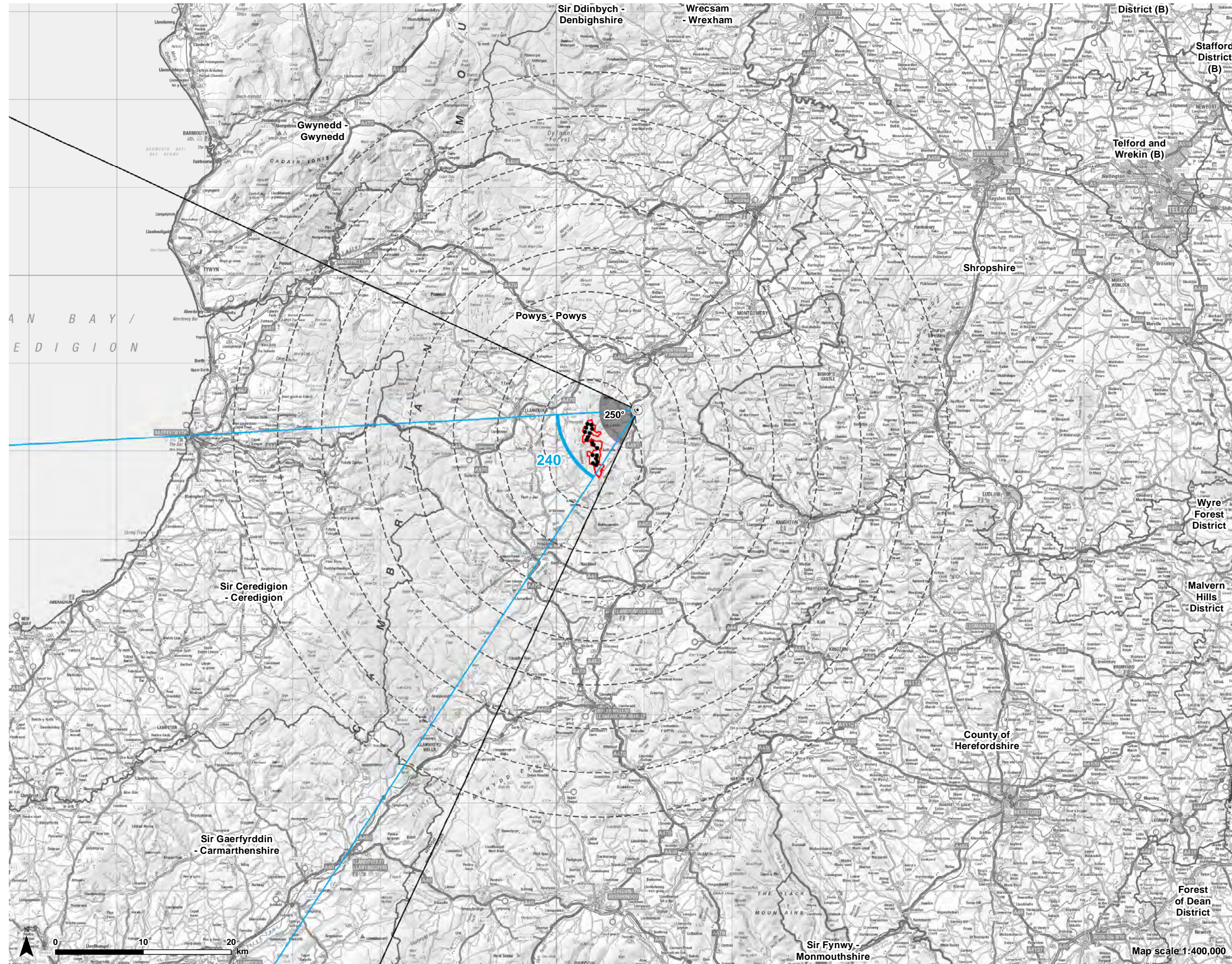
OS reference: 301907E 275245N  
 AOD: 337m  
 Direction of view: 25°  
 Nearest turbine: 4.1 km

Horizontal field of view: 53.5° (planar projection)  
 Principal distance: 812.5 mm  
 Paper size: 841 x 297 mm (half A1)  
 Correct printed image size: 820 x 260 mm

Wind Farm Developments key (by status): Proposed scheme Operational

© Crown copyright and database rights 2021 Ordnance Survey data Licence number: 0100051673





Garn Fach Wind Farm LVIA

**Figure 6-28a: VP8**  
Footpath north-east of Devil's Elbow

- Turbine location
- Site boundary
- Viewpoint
- 5km intervals from outermost turbines
- 45km from outermost turbines

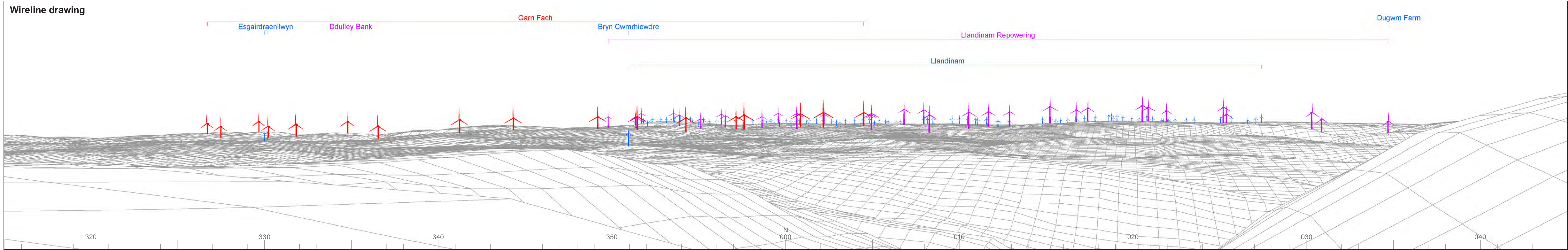
**Zone of Theoretical Visibility**

- 1-4 Turbines are visible
- 5-8 Turbines are visible
- 9-12 Turbines are visible
- 13-15 Turbines are visible
- 16-17 Turbines are visible

- 53.5° Field of View
- 90° Field of View

**Note**  
The ZTV is calculated to turbine tip height (149.9m) from a viewing height of 2m above ground level. The terrain model assumes bare ground and is derived from OS Terrain 50 height data (obtained from Ordnance Survey in July 2019).  
Earth curvature and atmospheric refraction have been taken into account. The ZTV was calculated using ArcMap 10.5.1 software.





OS reference: 309236E 284719N  
 AOD: 409m  
 Direction of view: 250°  
 Nearest turbine: 5.5 km

Horizontal field of view: 90° (cylindrical projection)  
 Principal distance: 522 mm  
 Paper size: 841 x 297 mm (half A1)  
 Correct printed image size: 820 x 260 mm

Camera: Nikon D750  
 Lens: 50mm Fixed Focal Length  
 Camera height: 1.5m

Photography Date: 17/05/2018  
 Photography Time: 11.19am

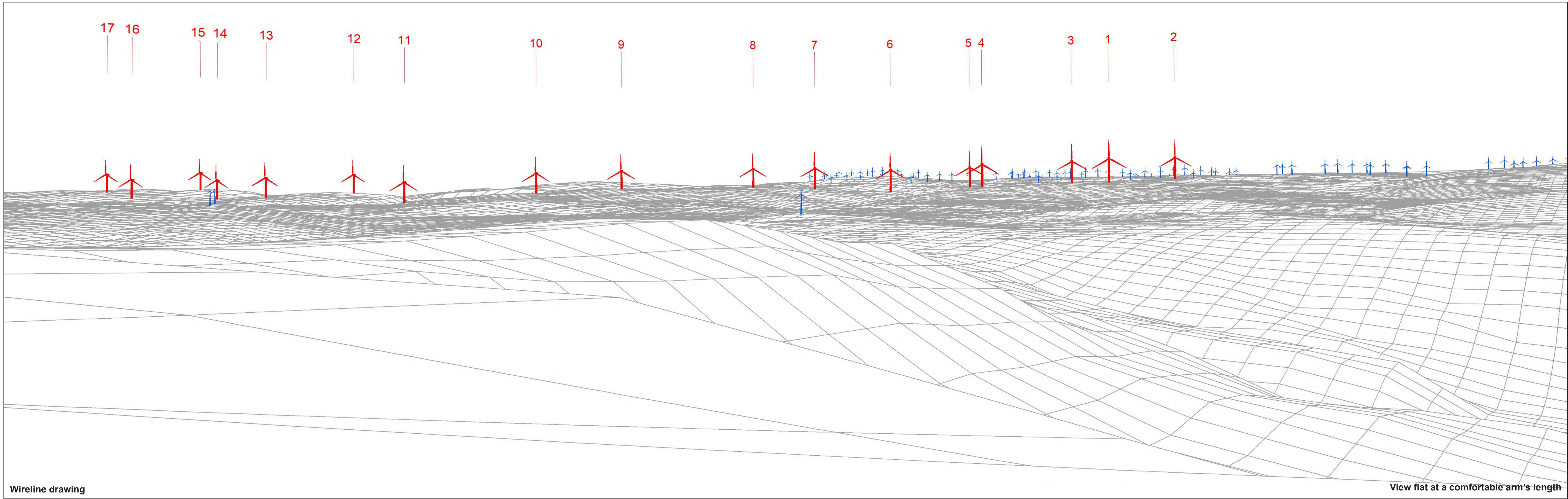
Wind Farm Developments key (by status):

Proposed scheme  
 Operational  
 Under construction  
 Consented  
 Application  
 Appeal/PLI

Garn Fach  
**Figure: 6-28b**  
 Viewpoint 8: Footpath north-east of Devil's Elbow

© Crown copyright and database rights 2021. Ordnance Survey data. Licence number: 0100051673

© Crown copyright and database rights 2021 Ordnance Survey data Licence number: 0100051673



Wireline drawing

View flat at a comfortable arm's length



OS reference: 309236E 284719N  
 AOD: 409m  
 Direction of view: 240°  
 Nearest turbine: 5.5 km

Horizontal field of view: 53.5° (planar projection)  
 Principal distance: 812.5 mm  
 Paper size: 841 x 297 mm (half A1)  
 Correct printed image size: 820 x 260 mm

Wind Farm Developments key (by status): Proposed scheme Operational

Garn Foch  
 Figure: 6-28c  
 Viewpoint 8: Footpath north-east of Devil's Elbow



Photomontage

View flat at a comfortable arm's length



OS reference: 309236E 284719N  
AOD: 409m  
Direction of view: 240°  
Nearest turbine: 5.5 km

Horizontal field of view: 53.5° (planar projection)  
Principal distance: 812.5 mm  
Paper size: 841 x 297 mm (half A1)  
Correct printed image size: 820 x 260 mm

Camera: Nikon D750  
Lens: 50mm Fixed Focal Length  
Camera height: 1.5m

Photography Date: 17/05/2018  
Photography Time: 11.19am

Garn Fach  
Figure: 6-28d  
Viewpoint 8: Footpath north-east of Devil's Elbow