



Cloich Forest Wind Farm

Pre-Application Consultation Report

June 2021



CONTENTS

1. Introduction and project background

2. Development consultation

3. Consultation activity timeline

4. Overview of consultation activities

Direct stakeholder engagement

Private water supplies

Website

News releases and editorial information

Project leaflets

Local newspaper advertising

3D visualisation technology

Public exhibitions

Community ownership opportunity

5. Consultation findings

Feedback from Stage 1 public consultation exhibitions

Feedback from project update/stage 2 public exhibitions

6. Developer response to the public consultation

Appendices

- 1. Copies of letters to Cloich Forest stakeholders**
- 2. Cloich Forest project page on EDF Renewables website**
- 3. Press releases**
- 4. Community leaflets/newsletters**
- 5. Local newspaper advertisements**
- 6. Public exhibition display banners**
- 7. Public exhibition visitor questionnaires**
- 8. Community ownership opportunity leaflet**

1. Introduction and project background

This Pre-Application Consultation Report (PAC Report) has been prepared by Mitchell Halton Watson Ltd. (MHW). MHW was appointed by Cloich Windfarm Partnership LLP (owned by EDF Renewables) ('the Applicant') to coordinate and support pre-planning application consultation activities in relation to an application to the Scottish Government for the proposed Cloich Forest Wind Farm ('the Development') approximately 5.5 kilometres (km) north-west of Peebles ('the Site').

The Development comprises up to 12 wind turbines and associated infrastructure, and a Battery Energy Storage System (BESS); the Development has a generation capacity exceeding 50 Megawatts (MW). All consultation was performed using the EDF Renewables brand name, which is associated with the applicant as described in Chapter 1: Introduction of the EIA report.

The Development represents a re-design of the consented Cloich Forest Wind Farm ('the Consented Scheme'), which was granted S36 consent and deemed planning permission following a Public Local Inquiry (PLI), on 8 July 2016 (Planning and Environmental Appeals Division (DPEA) Reference: WIN-140-1). The Consented Scheme was submitted to the Scottish Government's Energy Consents Unit (ECU) by the previous developer, Partnership for Renewables (PfR). The Consented Scheme comprises 18 turbines of 115 m to rotor blade tip height.

EDF Renewables purchased a number of wind farms from PfR in 2017, including the Consented Scheme. After carrying out a thorough evaluation of the project in light of changes in the renewable energy market and in turbine technology, EDF Renewables took the decision to re-design the wind farm.

The Development therefore incorporates a number of differences to the consented scheme including the use of taller turbines. As a result, the consultation activities detailed in this Report have been undertaken in relation to a new application under Section 36 of the Electricity Act 1989.

EDF Renewables values constructive input to the Development design and recognises the positive contribution that local knowledge and concerns can have in developing a sustainable, successful development. This is facilitated by effective communications and consultation activities to give local stakeholders the opportunity to learn about the proposal in the early stages of development. They can thereby share their views and concerns whilst the design process is ongoing and practicable alterations can be incorporated before the design is finalised where feasible.

Communications have been maintained with stakeholders throughout the pre-application design process for the Development. The final design of the Development has derived from an iterative process that has sought to respond to public and stakeholder feedback and respects the environmental sensitivities and characteristics of the Site and its surroundings.

This Report provides details of the range of methods, materials, and activities undertaken during the consultation process to describe what has been carried out in advance of the planning application to ensure that meaningful community consultation has taken place. In doing so this Report also explains the outcomes of the consultation programme and details where feedback has influenced the development process.

2. Development consultation

Proposals for wind farms with a generation capacity greater than 50 megawatts (MW), such as the Development, are subject to the consenting procedures set out in Section 36 of the Electricity Act 1989 ('the Electricity Act') and applications are made directly to the Scottish Government's Energy Consents Unit.

The Town & Country Planning (Development Management procedure) (Scotland) Regulations 2017 require 'Major' and 'National' planning applications to be accompanied by pre application consultation reports. Whilst this does not relate directly to Electricity Act applications, the Applicant has adopted its principles as good practice for this Section 36 application.

Planning Series Circular 3:2013 - Development Management Procedures (PCS 3:2013) also provides guidance for consultation. It emphasises the Scottish Government's wish to encourage improved trust and positive working relationships from the earliest stages in the planning process and to provide, where possible, an early opportunity for community views to be reflected in proposals. As part of this requirement it is stated that:

"...both pre-application consultations with the community and pre-application discussions with the planning authority and statutory consultees are intended to add value at the start of the development management process. They should improve the quality of the proposal and allow prospective applicants the opportunity to amend their emerging proposals in light of community, statutory consultee and planning authority opinion."

PCS 3:2013, 2.2

EDF Renewables was able to use the consultation programme to maintain links with stakeholders and dialogue with local communities. Initial consultation for Cloich Forest Wind Farm ensured that local residents were able to provide feedback, views and comments, at an early stage. This has helped to shape the Development as proposed. Follow up exhibitions relating to the final design showed how the development design had changed and provide an opportunity to ask questions to the Applicant and EIA team.

Working in Partnership with FLS

The Development will be located on part of the Cloich Forest site managed by Forestry & Land Scotland (FLS) and is located between Penicuik and Peebles in the Scottish Borders, to the west of the village of Eddleston.

FLS is the Scottish Government agency responsible for managing Scotland's national forests and land for timber production and other purposes including recreational use, nature conservation and renewable energy development. It actively supports the Scottish Government's ambitious emissions reduction targets and is committed to exploring the potential renewable energy resource on the land it manages.

The working relationship between EDF Renewables and FLS has sought to ensure optimal compatibility between forest management and wind energy production. FLS's extensive knowledge of Cloich Forest was complemented by the original EIA undertaken for the consented scheme and advanced by the environmental surveys and assessments carried out for the current application. EDF Renewables has consulted FLS throughout the design process for the new application.

As a result, this has ensured the proposal now being submitted is in accordance with the appropriate forestry management standards and will ensure that the forest can continue to be successfully operated by FLS.

Consultees

To ensure an inclusive approach to the consultation process, it was important to give the public and other stakeholders the opportunity to consider the proposals and discuss their thoughts and ideas with members of the project team through a variety of means.

An initial pre-application meeting was scheduled with Scottish Borders Council in April 2019. At this meeting, the Applicant met with the Council's Planning Case officer and Landscape Architect to review the previous application and discuss the potential for a revised application to be forthcoming.

Other EIA statutory consultees were introduced to the broad principles for the Development via a briefing note sent prior to a pre-scoping meeting held in Peebles on the 4th September. This was attended by the Applicant and EIA project manager as well as the ECU, Scottish Borders Council, Historic Environment Scotland and SNH and followed by a short site visit. The Scoping Report was circulated in October 2019 and consultees were asked to provide feedback to contribute to the Scottish Government's subsequent Scoping Opinion.

Direct contact with local community councils was first initiated in September 2019, with an introductory meeting coinciding with the request for Scoping Opinion in October 2019.

Two series of local public exhibitions were held, with the first one in February 2020 and then a second in April 2021, with the latter taking the form of a 'virtual' event in response to public meeting restrictions imposed by Covid-19 regulations.

The exhibitions were advertised in local newspapers and by letters and leaflets that were sent to all addresses within 5 km from the perimeter of the Site, taking in the village of Eddleston and extending to the edge of Peebles. Details were also provided on the project website (www.edf-re.uk/our-sites/cloich).

Overall, therefore, these consultation activities have sought to maintain dialogue on the Development with a wide range of local stakeholder groups including the following:

Community Councils

- Lamancha, Newlands & Kirkurd Community Council
- Eddleston & District Community Council
- Royal Burgh of Peebles & District Community Council
- Manor, Stobo & Lyne Community Council

Local residents:

Around 800 local households were included in a consultation catchment area of within 5 km of the Development Site boundary.

Elected representatives:

- Scottish Borders Council members for the Tweeddale West ward
- MSP constituency members for Midlothian South, Lauderdale & Tweeddale
- MSP regional members for South Scotland areas
- MP for Dumfriesshire, Clydesdale & Tweeddale UK parliamentary constituency
- MP for Berwickshire, Roxburgh & Selkirk UK parliamentary constituency

3. Consultation activity timetable

An ongoing programme of communications has been maintained with local stakeholders and residential communities in the vicinity of the proposed Cloich Forest Wind Farm.

Specific consultation activities have been undertaken as part of the following main programme:

April 2019

Introductory meeting with Scottish Borders Council to outline position and re-design plans.

August 2019

Introductory letters to community councils (Eddleston; Lamancha Newlands & Kirkurd; Royal Burgh of Peebles; Manor Stobo & Lyne) and follow up clarifications on ownership, community councils and consultation plans.

September 2019

Scoping meeting with Scottish Borders Council and ECU.

October 2019

Introductory letter and Scoping Report issued to consultees, with follow up contact with community councils, and introductory meeting with community council and Stewarton representatives.

December 2019

E-mail letter to Eddleston Community Council re consultation on Private Water Supplies (PWS) from Arcus Consultancy Services Ltd (Arcus).

January 2020

PWS Risk Assessment letter to residents in the PWS Study Area (Arcus).

February 2020

Leaflet mailshot to properties within 5km of site perimeter boundary, with invitation to public exhibitions and associated liaison with community councils.

Around 800 letters and leaflets were sent by first class post to local residents, plus direct e-mail contact with councillors and the offices/representatives of national elected politicians.

Newspaper adverts for exhibitions were placed in the Peeblesshire News on 7th and 14th February.

18th February - public exhibition, Newlands Activity Centre, Romanno Bridge (3.00 – 7.00pm)

19th February – public exhibition, Eddleston Village Hall, Eddleston (3.00pm – 8.00pm)

February/March 2020

Follow-up enquiries from exhibitions, including provision of information, visual representations and wireframes to nearby residents.

18th March – invited to meeting and presentation at Lamancha, Newlands & Kirkurd Community Council (subsequently cancelled because of Covid-19 restrictions).

Ongoing liaison with FLS and other statutory stakeholders on Development design evolution.

July/August/September 2020

Follow-up letters on PWS assessments distributed to properties where residents did not respond to the initial consultation round (Arcus).

Letters issued to properties which were identified as having a PWS to obtain contact information to allow for further consultation.

Further PWS consultation was conducted throughout August 2020 and September 2020.

During the period mid-August to late September a number of PWS site visits were carried out at various water sources supplying local properties which were considered to be in hydrological connectivity with the Development and /or where more information was required to determine the source location and source catchment.

December 2020

EDF Renewables Development Manager telecon with Malcolm Bruce chair of Peebles Community Council

April 2021

Production and printing of updated project leaflet with changes to scheme. Mailing of leaflet and combined letter to all local residents and stakeholders in consultation area, including invitations to second stage online public exhibitions. Around 800 letters and leaflets issued in total, plus direct e-mail contact with councillors and national elected representatives.

Email correspondence to community councils offering update presentations and invitations to second stage exhibitions.

News release issued to local newspapers and community news platforms on the online exhibition.

Newspaper advertisement place in Peeblesshire News promoting the online exhibitions (April 9th).

Cloich Forest wind farm website project page on EDF Renewables website updated (www.edf-re.uk/our-sites/cloich), including click through link to online exhibition.

Online exhibition available for viewing from 16th to 26th April with feedback form available to visitors.

April/May 2021

Follow up contact and provision of information to enquirers, local residents and stakeholders who visited the online exhibition.

4. Community consultation activities

The following sections describe the various communications and consultation activities that have been carried out for the proposed Development.

Direct stakeholder engagement

Direct communications activities have been undertaken with specific local stakeholders, residents and groups.

Written contact has been made with community councils, elected local authority members and both UK Government and MSP members to offer individual briefings and project updates and in advance of the public consultation events.

Invitation letters were sent to around 800 local households within 5 km of the Site boundary ahead of the February 2020 public consultation events and in advance of the April 2021 virtual online exhibitions. The letters provided direct contact details for anyone unable to attend the events but who had questions about the project or required further details on the scheme.

The chairs, secretaries and members of local community councils were also notified (by e-mail) in advance of the public exhibitions and the subsequent online exhibition. On both occasions offers of presentations and Q&A sessions by members of the project team were also made.

Copies of letters sent to elected members, community council members and local residents are provided in Appendix 1 to this Report.

Throughout the consultation, and particularly as a result of any issues raised during the public exhibitions, contact has been made in response to any questions raised, to demonstrate visibility impacts and to provide all requested documentation, montages and wireframes.

Private Water Supplies

At an initial meeting arranged via Eddleston community council (and also attended by some residents of Stewarton at the invitation of the community council), attendees raised the matter of impacts on water supplies as a principal concern and highlighted that this had been a matter of investigation at the public inquiry for the Consented Scheme. Accordingly, a substantial amount of consultation and investigation has been undertaken with surrounding residents to ensure that the water supply baseline could be mapped and accounted for accurately.

Letters were distributed to 178 properties within the PWS study area over the period 30th January 2020 to 24th February 2020 to identify and confirm PWS and obtain information on the type and source location of supplies. A total of 64 responses were received.

Follow-up letters were distributed to properties where residents did not respond to the initial consultation round on the 29th July 2020. Letters were also issued to properties which were identified as having a PWS on the 29th July 2020 to obtain contact information to allow for further consultation.

Further consultation was conducted via telephone or via email where possible, to reduce the need for face-to-face interaction, in light of government-mandated social distancing restrictions as a result of the Covid-19 pandemic. Further consultation was conducted throughout August 2020 and September 2020.

Site visits were conducted at properties which were considered to be in hydrological connectivity with the Development and / or where more information was required to determine the source location and source catchment.

Site visits were conducted between 17th August 2020 and 23rd September 2020 at 9 sources which supply a total of 24 properties. Site visits were conducted following suitable Covid protocols at properties following residents' and land owners' approvals. It was not possible to conduct site visits where access was not granted by the resident or landowner.

Website

EDF Renewables established a Cloich Forest Wind Farm project website page at www.edf-re.uk/our-sites/cloich. The website provides a background to the revised project, updates on project activities and downloads of project documentation.

A screenshot of the Cloich Forest Wind Farm project page is included as Appendix 2 to this Report.

News releases and editorial information

Press information on the Development and the public exhibitions have been issued to local newspapers and media. Copies of the press releases are provided in Appendix 3 to this Report.

Project leaflets

Two project leaflets have been distributed during the consultation campaign, with both being accompanied by letters to invite local residents, community council members and local council representatives to the exhibitions.

The initial leaflet, distributed ahead of the February 2020 consultation exhibitions, advertised the exhibitions, introduced the re-design and provided details of community engagement and feedback opportunities. A second leaflet, circulated in April 2021 ahead of the virtual online event, provided a project update with the proposed amendments to the initial plans.

Both leaflets included an overview of the scheme, environmental information, contact details for written queries and full information on the exhibitions. Both leaflets also provided details of the planning application process and how residents could submit their comments to both the ECU and the local planning authorities once the application had been submitted.

The leaflets were designed to ensure that any residents who could not attend the public exhibitions were given as much information as possible on the scheme and had the opportunity to provide feedback on the proposal.

Copies of the leaflet and an accompanying letter were mailed to around 800 local addresses and included business addresses as well as individual households. Additional copies of the leaflet and event posters were provided to the community councils ahead of the first public exhibitions for distribution in suitable public places.

Copies of the two Cloich project leaflets are provided in Appendix 4 to this Report.

Local newspaper advertising

Full colour, quarter page advertisements were purchased in the most appropriate local weekly newspapers to promote the public consultation events in the two weeks immediately preceding the February public exhibitions. These were in the Peeblesshire News on the 7th and 14th February 2020

For the online public information exhibition, a newspaper advert was placed in the Peeblesshire News to appear on 9th April 2021.

As well as in-paper advertisements, arrangements were made with the publishers of the local newspaper to include adverts and sponsored posts on the newspaper websites and other social media platforms including Facebook. Samples of the newspaper adverts are included in Appendix 5 to this Report.

The artwork for the newspaper adverts was also used to produce A4 and A3 size printed posters that were supplied to exhibition venues, local pubs, shops and hotels for public display ahead of the first round of public consultation events in February 2020.

3D visualisation technology

Special 3D visualisation technology was commissioned to demonstrate the turbine layout on the Site.

It combines detailed terrain, building and vegetation data, satellite imagery of the site, and local photography to model the turbine layout in a dynamic 3D re-creation of the site and surrounding area. As a useful design and communication tool, it enables to user to view the wind farm from anywhere in the local landscape. Other existing and planned wind farms in the area were also included so that cumulative impacts could be demonstrated and viewed.

The model enables views of the proposed layout to be replicated from nearby properties, postcodes and vantage points, and also has the flexibility to show visualisations from different heights.



As well as being used to demonstrate layouts and views for visitors to the exhibitions on a large format TV screen, print out copies of specific replicated views were provided where requested by some residents.

A special online version of the 3D visualisation system was also incorporated in the online exhibition held in April 2021 so that visitors could see replicated EIA views of the revised layout.

Public exhibitions

Two series of community exhibitions have been held to provide information on the Development and gather feedback from attendees. The first events in February 2020 took the form of conventional walk-in consultation events in local community venues.

A planned second series of public events at the same venues was replaced with an interactive online 'virtual' event in April 2021 as a result of the public meeting restrictions imposed by Covid-19 regulations. The online exhibition was presented as a project update and information event providing the opportunity for visitors to view and ask questions relating to the final layout

First public consultation exhibitions:

After taking advice from local community councils and drawing upon the approach adopted for the Consented Scheme, the first round of public consultation exhibitions on the new application were hosted at well-known and accessible public venues.

The consultation events were held in the following locations:

- 18th February, Newlands Activity Centre, Romano Bridge (3.00 – 7.00pm)
- 19th February, Eddleston Village Hall, Eddleston (3.00pm – 8.00pm)

Display boards at the exhibition provided information on:

- the background to wind farm development and the Cloich application;
- project details for the Development;
- visualisations and views from local vantage points;
- opportunities for community liaison and involvement ;
- the planning application process and further consultation; and
- copies of photomontages and other plans linked to the Development.



Events were held on different days and extended into the early evening, to give visitors a range of opportunities to attend at their convenience and to provide feedback.



Online Exhibition:

Following the first round of public exhibitions, the views and comments of local residents and stakeholders were taken into account as part of the continuing design evolution for the Development. It was originally intended to hold another round of exhibitions to present the final design at the same local venues, but the introduction of Covid-19 restrictions meant that this was not possible.

Instead, EDF Renewables sought to include the full breadth of information that would normally be provided at an actual public exhibition in a virtual online portal that comprised the all of the conventional information provided at face to face events, including display boards, 3D visualisations, maps, plans, photomontages and feedback forms.

In addition, because the virtual exhibitions were available online, accessibility was provided over an extended period including weekends and visitors to the event also had the option of downloading or printing copies of the display materials for viewing and inspection.

The virtual exhibition and information event was available from 16-26th April 2021 and was promoted by the distribution of a leaflet to local residents, an advertisement in the Peeblesshire News and direct contact with local community councils and elected representatives.



The primary aim of the online update was to provide an opportunity to view the final layout proposals for the Development and submit any queries to the project team ahead of the submission of the application and formal consultation. To help in this process, all visitors to the exhibitions were encouraged to complete a brief questionnaire after viewing the display information.

Different questionnaires were used at the two stages of the exhibitions to assess opinions and feedback on the proposal as the layouts and turbine numbers were changed during the design stages of the development. Feedback forms submitted by visitors to the online exhibition were automatically submitted to EDF Renewables for consideration and response.

Copies of the questionnaires are included in Appendix 7 to this report and a review of the feedback received is included in the next section of this Report.

The exhibitions also highlighted that all application documents would be published on the project website, and how formal representations may be made to the ECU, once the application is submitted.

Community ownership opportunity

Although both public exhibitions included references to EDF Renewables' support for shared ownership of the Development, ahead of the virtual exhibitions a separate leaflet was produced specifically on this issue (see Appendix 8).

The leaflet explained that, as part of the Development agreement established with FLS, there was the opportunity for the local communities and FLS together to take up to a 25% stake in the Development.

The leaflet was circulated to community councils and local development trusts as a means of formally raising this issue and providing some general background.

5. Consultation findings

Questionnaires and feedback forms were provided for visitors to complete at both rounds of exhibitions, to encourage them to provide comments on the proposals or seek more information. All feedback was considered as part of the design process and a revised design was presented at the second exhibition. It was made clear at the exhibitions that feedback was not a formal representation on the application and highlighted how and when such a representation could be made. The responses are therefore summarised separately below.

Feedback from first series of public exhibitions

The first stage exhibitions were intended to introduce the Development to local residents, to explain the development process and to provide some initial details on the design of the Development on which comments and views were encouraged.

Details of attendance at the different venues were as follows:

Table 5.1: Details of first series of exhibitions

Exhibition venue	Number of attendees	Questionnaires completed	Invitations issued
Newlands Activity Centre, Romano Bridge, Tuesday, 18 th February	55	49	Approx. 800
Eddleston Village Hall, Eddleston Wednesday, 19 th February	47		

The relatively high proportion of questionnaires completed in relation total number of visitors showed a high level of engagement and interest in the Development from those who attended the exhibitions, with all those attending indicating that they were local residents.

Among the visitors to the exhibitions, the majority said they were attending as a result of the invitation letter they received in the post (65%) with others referring to a range of sources including the project website as well as word of mouth, community councils and local display posters. Nearly 94% of those responding said that they were aware of the original consented Cloich Forest scheme.

In terms of the information provided at the exhibitions, the vast majority (88%) were of the view that the events were 'useful and informative'.

To help gauge the views of visitors to the exhibition, the questionnaires sought answers to a number of specific questions that included opinions on general energy matters alongside specific questions on the new Cloich Forest Wind Farm proposal.

Questionnaire Responses

The following section lists the questions posed on the questionnaires and summarises the responses provided by the attendees that completed them. 'Are you concerned about the potential effects of climate change?'

Yes	84%
No	4%
Unsure	12%

'Do you support the generation of renewable energy in Scotland?'

Yes	76%
No	6%
Unsure	18%

'Do you support the development of onshore wind farms?'

Yes	42%
No	29%
Unsure	29%

'Are you supportive of the new proposal?'

Yes	41%
No	35%
Unsure	24%

In terms of further information, visitors were asked for their views on the Development and the following individual comments were received.

The main issues highlighted on the questionnaire responses were:

- potential impacts on private water supplies – and any planning conditions that might be imposed;
- some clarification on construction traffic raised by those living closest to the access road;
- Interest in the community benefit fund, eligibility and how it would operate;
- concern expressed over increased height/visibility in landscape; and
- queries relating to the grid connection.

Specific comments included the following:

On the proposed turbine number and size:

Still concerned over revised height of turbines

Works fine for me

Would welcome proposals to reduce visual impact with placement of screening

The revised proposal will considerably worsen the impact on local people and visitors

Unacceptable turbine height/scale

Concerned over visual impact from Peebles

Concerned about height and increased noise levels

*More, smaller turbines would have less impact
Far too high for the local topography
There is no significant difference in effect
The effects will overwhelm the landscape
Glad to see reduced numbers but unhappy over increase in size*

On private water supplies:

*Concern over disruption to private water supplies
Likely to have a detrimental effect on private water supplies
Moving turbines from all PWS catchment areas is an essential first step
Previous issues regarding water supplies have not been resolved*

On the community benefit fund:

*Consider use of benefit fund to support the proposed cycle track from Eddleston to Peebles
Need to maximise any benefits for local communities*

On wildlife/ecology:

*Consider any net biodiversity gain from the development
The numbers of raptors in the area is decreasing
Even more opposed to this beautiful valley being spoilt with industrialisation*

On construction:

*Need more details on building plans and use of local roads
Concerned about traffic and use of large vehicles
Need to preserve existing woodland tracks (no tarmac)*

Generally:

*Having had many questions answered, have lowered my initial feelings
Important to retain amenity value of site for walking and cycling trails
The wrong development in the wrong place
Need as wide as buffer as possible against the Borders Drove Road
This will have a far greater effect on landscape issues?
Where is the grid connection point and how will the connection be made?
Have been reassured about the environmental impacts of the proposal
I think this would benefit the local community*

Feedback from the online exhibition

Because of the restrictions on public gatherings introduced as part of the Covid-19 regulations, the second series of public exhibitions were held online, in a 'virtual' format.

However, the full range of wind farm information, visualisations and supporting details were provided in an accessible, easy to follow format that included opportunities to provide their comments and feedback, as well as asking any questions of the project team.

Table 5.2: Details of the online exhibition

Exhibition venue	Number of attendees	Questionnaires completed	Invitations issued
Cloich Forest online exhibition 16-26 April 2021	Total visits - 277 Unique visits - 165	Feedback forms - 10	Approx. 800

Website analytics from the online exhibition portal showed that a total of 277 visits to the site were recorded, comprising 165 unique visits and some repeat views. The feedback forms were all received from local residents, from postcodes EH45 and EH46.

Among the visitors to the exhibitions, from the feedback forms returned, the majority said they were attending as a result of receiving the invitation letter and leaflet they received in the post (60%) with others referring to word of mouth and social media mentions. 7 of the feedback forms regarded the information provided at the exhibitions as 'useful' with 2 saying it had not been.

Overall, of the 10 visitor feedback forms returned from the online exhibition, 4 were opposed to the proposal, three were in favour and three were undecided.

Following the exhibition, information was provided in response to a range of queries from visitors and a number of requests from residents for indicative views taken from the 3D model were supplied.

The main issues raised by visitors to the online exhibition were the proposed height of the turbines and concerns over PWS. To help gauge the views of visitors to the online exhibition, visitors were asked a number of questions on the new proposal.

Visitor views expressed on the new proposal included:

Don't want it too high, you will be able to see them for absolutely miles

I support the proposal

Worried about increased noise from increased height

I think that the graphics underplay the visual impact of the turbines

EDF appears to be oblivious to the huge visual impact that this will have

This is a really significant increase in height and will have a corresponding significant increased impact on the environment.

*Taller turbines are probably better than more turbines, but perhaps are you are keeping quiet about a second phase?
I would like to see enhanced access to the area for horses, walkers and cyclists
Reduction is good but this is higher than the original proposition that was reduced at enquiry*

In response to the question, 'Have the proposed changes to the wind farm changed your opinion of the project in any way?' comments were as follows:

Still support the proposal

No, there are too many and they are too high

The increase in height just makes the whole project even more visually intrusive and even less acceptable.

EDF should be concentrating its efforts offshore.

No - we are a fragile community, dependent on private water supplies. We are concerned that our water supply may be affected and make living in the cottage unsustainable.

Knowing that there will be fewer, I am even more supportive of the project than I was before.

The access route remains problematic

We require absolute reassurance about our water supply or a concrete guarantee of restitution of supply if interrupted/contaminated

On the community benefit fund and community ownership, the following comments were made:

Grateful if horse riding around the wind farm is possible

I would invest in an offshore development, but not this eyesore

Yes. How do I sign up?

The principle of community benefit is important. Profit-sharing may be more viable than the community owning physical infrastructure.

Other general comments made by visitors to the online exhibition were as follows:

Too many of us living with PWS in the water catchment area of this site

We have to be clear that any negative effect of these turbines pales in comparison to the horrible coniferous plantations that have blighted these same hills for decades.

I cannot imagine how anyone could oppose the turbines. We need more turbines.

6. Developer response to the public consultation

The feedback received from consultation and an emerging understanding of the Site through the EIA process have been the principal criteria for informing the design layout of the Development. Where sensitivities have been raised or identified by consultees, details of the layout have been adjusted to avoid impacts on these sensitivities where possible.

The following section sets out the key issues raised during the pre-application period. Where appropriate, comments have been made to address these issues or highlight where changes have been made to the application as a direct result of the feedback received.

Private water supplies

Detailed private water supply studies have been undertaken as part of the consultation with local residents to inform the assessment of the site.

As part of this approach, a detailed assessment of local hydrological features and private water supplies has been undertaken. To ensure that the private water supply risk assessment (PWSRA) is robust the following steps have been taken:

- Reviewed information submitted as part of the previous planning application;
- Undertaken consultation with Scottish Borders Council, Scottish Environment Protection Agency (SEPA), and local residents regarding the methodology of the PWSRA;
- Sent out PWS questionnaires and collated responses;
- Reviewed information from residents on land use and the local hydrology of the area, and
- Undertaken site walkovers and visited properties, where possible.

The information gathered through the PWSRA methodology was used to inform the design of the proposed development through all stages of the EIA process and has led to specific relocations of turbines and tracks to avoid hydrological sensitivities. In particular, all of the turbines have been located away from the crest of the ridge on the far side from Stewarton and other areas of hydrological sensitivity within this locale have been avoided.

Following a full assessment of hydrological interests, including private water supplies, it is not anticipated that any significant effects will occur as a result of the development in relation to hydrology and hydrogeology.

Turbine layout and the use of larger turbines

The final layout proposal has been the subject of a number of iterations and refinements to mitigate predicted adverse effects and address stakeholder concerns as far as reasonably practicable. An overview of the design process is outlined in Chapter 2: Site Selection & Design of the EIA report.

The design that was presented at the public exhibitions in February 2020 proposed to reduce the originally consented 18 turbines planned for the site down to up to 14 turbines at an increased height of up to 149.9m. Following the exhibitions, environmental surveys and assessments continued on Site, and the responses from the public and statutory consultees have been fed into the continued evolution of the layout.

In particular, landscape effects, hydrology, complying with noise limits and developing a visually cohesive scheme within the context of local forestry, topography and other conditions have all been

key elements of the overarching design strategy that has now produced an amended layout proposal.

Taking all these factors into account, the Applicant reduced the proposed number of turbines to 12 and changes have been made to the location of all turbines when compared to the Consented Scheme. In making these changes the Applicant has developed a layout which takes into account a variety of environmental factors, including nearby residences and private water supplies, amongst others.

The increase in tip height has enabled a reduction in the number of turbines. The design has sought to propose a balanced array of turbines from key viewpoints.

Overall the aim of the design revisions has been to create a balanced layout that strikes the best balance between environmental, technical and financial viability matters.

Potential noise effects

Avoiding noise impacts at nearby residential properties has been a key development consideration. In response to queries and concerns expressed over potential noise from the wind farm, detailed modelling exercises have been undertaken for the various layout iterations throughout the design process.

At all stages, industry-specific noise propagation models have been used to provide feedback on draft and final proposed layout to ensure that turbine noise levels comply with nationally recognised noise guidance and ensure that operation of the Development would comply with the noise condition applied to the Consented Scheme.

Use and distribution of community benefit fund

Several of the attendees to the public exhibitions expressed an interest in the community benefit fund for the Development should it receive consent. In response to questions, EDF Renewables has reiterated its commitment to establish a community benefit fund for the Development which would be set up in line with Scottish Government's Good Practice Principles for Community Benefits from Onshore Renewable Energy Developments.

It is intended that the proposed community benefit fund would be specifically designed to address local needs and the fund value would be in line with Scottish Government recommendations, currently £5,000 per MW, index linked over the lifetime of the Development (30 years).

Throughout the consultation period it has been explained to community councils and residents that more detailed decisions on how any community benefit fund for the Development would be allocated or spent would be most effective during the period leading up to construction, if the Development is granted consent.

EDF Renewables has therefore confirmed that it would remain in contact with local community councils and community development trusts during this period so that effective liaison and dialogue could be held at the appropriate time.

Part of this liaison would be an undertaking to more closely establish what specific local needs might best be addressed by a community benefit fund and what form of administration, management and governance arrangements would best serve local residents.

Cloich Forest Wind Farm

Pre-Application Consultation Report

Appendix – order of contents

- 1. Copies of letters to stakeholders**
 - 1a - Community Council letter for review of Cloich site**
 - 1b – Resident letter for first stage exhibition**
 - 1c – Residential addresses distribution area**
 - 1d – Councillor & Community Council letter for first stage exhibition**
 - 1e – Resident letter for online exhibition stage exhibition**
 - 1f – Community Council, Councillor, MP and MSP e mail for online exhibition**

- 2. Cloich Forest website page**

- 3. Local media liaison**
 - 3a – Press release**

- 4. Community leaflet/newsletters**
 - 4a – Newsletter/leaflet for first stage exhibitions**
 - 4b – Newsletter/leaflet for second stage exhibitions**

- 5. Local press advertisements & posters**
 - 5a – Local press advert artwork Jan/Feb 2020**
 - 5b – Local newspaper advert in paper February 2020**
 - 5c - Poster for local display**
 - 5d – Local press advert artwork April 2021**
 - 5e – Local newspaper insert in paper April 2021**

- 6. Public exhibition display banners**
 - 6a – Display banners for first stage exhibitions**
 - 6b – Display banners for online exhibitions**

- 7. Public exhibition visitor questionnaires**
 - 7a – Visitor questionnaire for first stage exhibitions**
 - 7b – Visitor feedback form for online exhibition**

- 8. Community ownership opportunity leaflet**

27th August 2019

Dear Community Councillor

Review of Cloich Wind Farm

I would like to provide an update regarding the Cloich Wind Farm, which is now under the ownership of EDF Renewables following the purchase of the wind farm development portfolio of Partnership for Renewables (PFR).

As you will know, PFR received planning permission for the Cloich Wind Farm in 2016 following an application in 2012 and a public inquiry in May 2015. This wind farm planning permission is for 18 turbines that are 115 m to tip.

Since permission was granted to build the wind farm there have been changes in government support for renewables, prompting EDF Renewables to review the consented development to make it more efficient. In order to make the wind farm more productive a new application for less but slightly taller turbines is being developed.

We intend to re-design the wind farm and we are considering fewer turbines (around 13 turbines instead of 18) at an increased height (around 140m) of those previously consented (115m). Because the installed capacity will still be over 50MW (previously consented at 54MW), a new Section 36 application would be made to the Scottish Government's Energy Consents Unit (ECU).

As part of the re-design, in the coming months we will be initiating the Environmental Impact Assessment process which will include the issue of an EIA Scoping Report. This will be sent to yourselves and the other relevant consultees for input. We also intend to carry out some pre-application consultation with local residents and other stakeholders with public exhibitions and a project website. We expect to produce and circulate an EIA scoping report in September / October 2019 and hold two public exhibitions shortly afterwards.

I work with EDF Renewables to provide support with community liaison and will be organising the public exhibitions in due course. If you would like to discuss the project please feel free to contact either myself or the project manager, Richard Fisher (richard.fisher@edfenergy.com).

We would be happy to meet with the community council to discuss the project further if you would find that helpful at any time.

Yours sincerely,

Ian Watson
On behalf of EDF Renewables
Community Liaison Manager Cloich Wind Farm

ian@mhwpr.co.uk Tel: 0191 233 1300



EDF Renewables
Atria One
144 Morrison Street
Edinburgh
EH3 8AX

4th February 2020

Dear Householder

Update on Cloich Forest Wind Farm

I would like to provide an update on the Cloich Forest Wind Farm, which is now under the ownership of EDF Renewables following the purchase of the wind farm development portfolio of Partnership for Renewables (PfR).

As you may know, PfR received consent for the wind farm in 2016 following an application in 2012 and a public inquiry in May 2015. The wind farm planning permission is for 18 turbines with a vertical blade tip height of 115 metres.

Since taking over responsibility for the wind farm, EDF Renewables has reviewed the consented development to explore ways of making it more efficient and productive. We are now in the early stages of developing a design for a reduced number of taller turbines.

The enclosed leaflet explains the current situation and includes details of public information exhibitions being held in February..

Tuesday, 18th February, Newlands Activity Centre, Romano Bridge (3.00pm – 7.00pm)

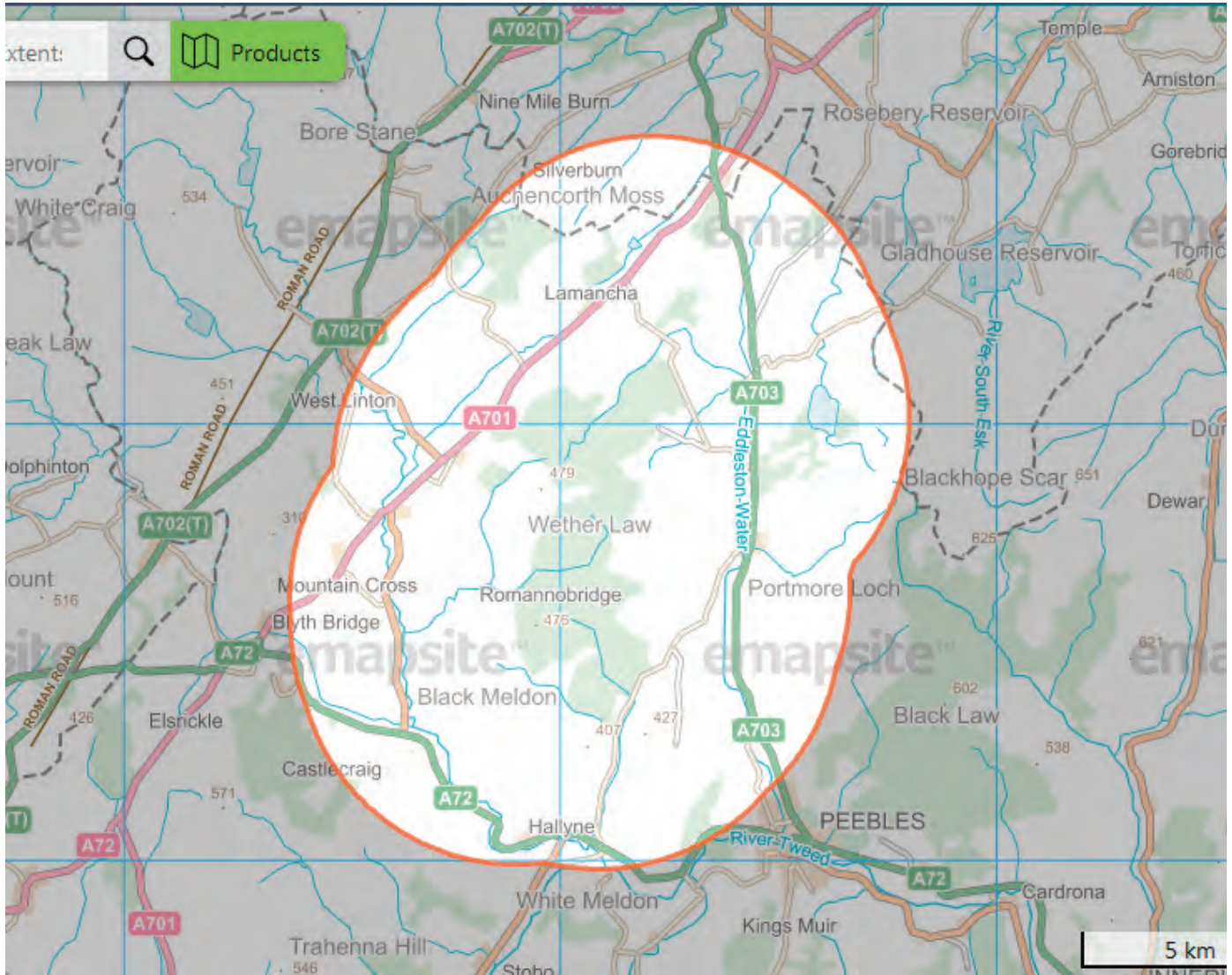
Wednesday 19th February, Eddleston Village Hall, (3.00pm – 7.00pm)

Members of the wind farm development team will be available at these events to answer any questions you may have. Details are also available at www.edf-re.uk.

Yours sincerely

A handwritten signature in black ink that reads 'Ian Watson'.

Ian Watson on behalf of EDF Renewables
ian@mhwpr.co.uk Tel: 0191 261 2773



From: Ian Watson
Sent: 03 February 2020 12:48
To: cloich community councils
Cc:
Subject: Cloich Forest Wind Farm Update

Dear All

I wanted to let you know that local public exhibitions to update local residents on the current situation regarding Cloich Forest Wind Farm have now been confirmed and will be held on the following dates:

Tuesday, 18th February, Newlands Activity Centre, Romanno Bridge (3.00pm – 7.00pm)

Wednesday 19th February, Eddleston Village Hall, (3.00pm – 7.00pm)

Background details are included in the attached leaflet, which will be mailed to local residents in the next day or two. Advertisements will also be appearing in the Peebelesshire News (and on its online platforms) later this week and in next week's edition.

Members of the wind farm development team will be available at these events to answer any questions you may have.

In the meantime, if you have any further enquiries, please let me know.

Regards

Ian

Ian Watson, Mitchell Halton Watson Ltd
Alderman Fenwick's House, 98-100 Pilgrim Street, Newcastle upon Tyne, NE1 6SQ
Tel: 0191 261 2773 E: ian@mhwpr.co.uk W: www.mhwpr.co.uk



EDF Renewables
Atria One
144 Morrison Street
Edinburgh
EH3 8EX

12th April 2021

Dear Resident

Proposed Cloich Forest Wind Farm - Online Exhibition

I am writing to update you on our proposed plans for the Cloich Forest Wind Farm, situated on the commercial forestry site managed by Forestry and Land Scotland (FLS), west of Eddleston Village in the Scottish Borders.

Since hosting our exhibitions in February last year and listening to the views of local residents and stakeholders, we have continued to develop our design for the site. Our new proposal has considered the feedback received from residents and consultees and has sought to produce a viable project which is both environmentally and technically robust. The details of the changes made to the earlier site design that form our new proposal are included in this leaflet.

In addition, we will also be providing more comprehensive information on the proposed wind farm in a virtual exhibition, which will be available for viewing online from 16th to 26th April.

Naturally, we would have preferred to have been able to host another round of public information days at local venues, but Covid-19 restrictions mean that we are unfortunately unable to do so.

Nevertheless, we have attempted to include the full breadth of information that would normally be available at the exhibitions in an online environment and this includes 3D visualisation of the proposed wind farm.

Full details of how to access the exhibition and ask us any questions are provided on the back page of this leaflet.

As well as contacting us with any comments on the proposal at this stage, you will also have the opportunity to make your views known to the planning authorities once the formal application has been made. Full details of this process are also provided in this leaflet.

I very much hope that this information and our online exhibition is of interest to you.

Yours sincerely

A handwritten signature in black ink that reads 'R. Fisher'.

Richard Fisher
Onshore Wind Development Manager

Richard.Fisher@edf-re.uk

Appendix 1F

Email to community councillors, ward councillors, MPs and MSPs – Cloich Forest Wind Farm

14th April 2021

Dear Community Councillor

Proposed Cloich Forest Wind Farm

I wanted to let you know that an online exhibition will be available later this week to provide an update on the new application for the proposed Cloich Forest Wind Farm.

Since hosting the public consultation exhibitions last year, and listening to the views of local residents and stakeholders, we have continued to develop our design for the site and the exhibition will include details of a final proposed layout which reduces the number of turbines on the site to 12, from the 18 included in the consented scheme.

Details have also been included in a leaflet (attached) that was sent to all local households earlier this week.

Naturally, we would have preferred to have been able to host another round of public information days at local venues to explain the latest layout, but Covid-19 restrictions mean that we are unfortunately unable to do so. However, to ensure that our proposal is shared as widely as possible with local communities, as well as circulating the leaflet, the online exhibition will include the full breadth of information that would normally be available at these events.

The exhibition, which will run from 16th April to 26th April, will include information panels, environmental information, maps, photo montages and a 3D model showing virtual visualisations of the wind farm. Visitors to the virtual village hall can also complete a feedback form to provide comments or ask any questions. The exhibition will be accessible via a link to be provided on the project page on the EDF Renewables website at www.edf-re.uk/our-sites/cloich

We hope you find the event useful and we would of course be happy to provide you with any further details on the project you may require. Richard Fisher, Development Manager for the Cloich Forest project, would be happy to dial into and join one of your forthcoming community council meetings to present the latest information on the wind farm and answer any questions members may have.

If this is something you would like to do, please let me know and we can sort out the necessary details.

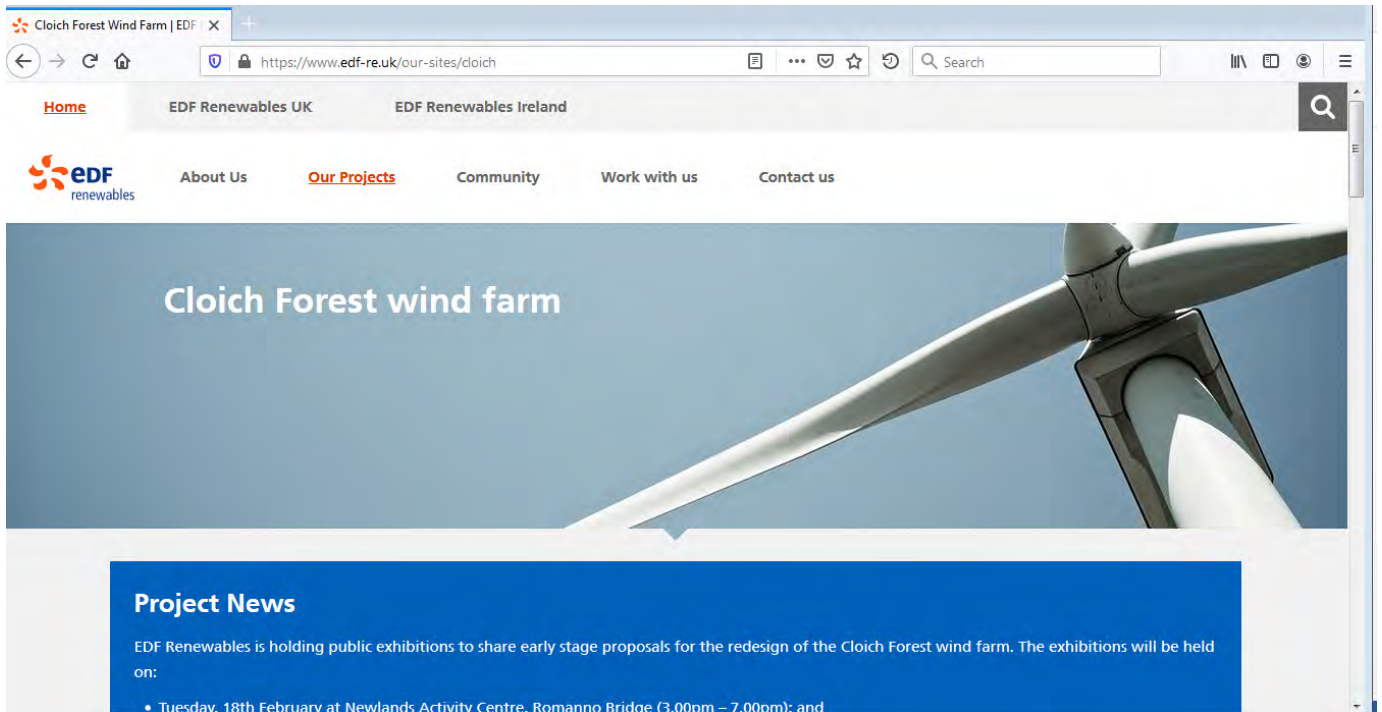
Finally, if the wind farm is consented, EDF Renewables proposes to make a proportion of the new development available for community ownership and an introductory leaflet on this will also be available in the online exhibition.

Yours sincerely,

Ian Watson
On behalf of EDF Renewables

ian@mhwpr.co.uk Tel: 07730 614727

Ian Watson, Mitchell Halton Watson Ltd
Alderman Fenwick's House, 98-100 Pilgrim Street, Newcastle upon Tyne, NE1 6SQ
Tel: 0191 261 2773 E: ian@mhwpr.co.uk W: www.mhwpr.co.uk



Project Description

EDF Renewables is in the process of developing a new design for the Cloich Forest Wind Farm, which is located on a site to the west of Eddleston village, 5.5km north-west of Peebles, within the Scottish Borders.

Consent for a wind farm was originally granted in 2016 by the Scottish Government's Energy Consents Unit (ECU) following a submission by the previous owners, Partnership for Renewables (PFR), and the approved wind farm comprises 18 turbines with a vertical blade tip height of 115 metres.

EDF Renewables acquired the development portfolio of PFR in 2017 and is now reviewing the project to improve the productivity of the wind farm following changes in the financial support mechanism for wind farms. The process of re-designing the wind farm is still at an early stage and a final design and turbine parameters will not be finalised until the Environmental Impact Assessment (EIA) process for the scheme is at a more advanced stage.

Because the installed capacity will still be over 50MW (previously consented at 54MW), any new Section 36 application would be made to the Scottish Government's Energy Consents Unit.

The Cloich Wind Farm development is on the national forests and land managed by Forestry Land Scotland (FLS) on behalf of Scottish Ministers. EDF



12th April 2021

UPDATE ON NEW DESIGN FOR PROPOSED CLOICH FOREST WIND FARM

Local residents are being invited to an online exhibition to find out more information on a new planning application for Cloich Forest Wind Farm located to the west of Eddleston in the Scottish Borders.

An 18 turbine wind farm at Cloich Forest was originally consented in 2016. The new application is to reduce the number of turbines and increase their height to improve productivity from the project.

The online exhibition, which will run from 16th April until 26th April, will include information panels, environmental information, maps, photo montages and a 3D model showing virtual visualisations of the wind farm. Residents will also have the opportunity to complete an online feedback form to provide comments or ask any questions.

Since hosting public consultation events in February 2020, work has continued on developing a new layout for the wind farm and the exhibition will provide details of the new proposal for 12 turbines at 149.9 metres to tip height.

Stephen Walls, Head of Onshore Wind Development at EDF Renewables said: “The new Cloich Forest wind farm design would be able to produce more electricity at a lower cost than the consented wind farm and would make a bigger contribution to reducing CO₂ emissions which will accelerate the UK’s goal to reach net zero.

“We would encourage people to visit the exhibition and support the application.”

The new Cloich Forest wind farm, with a proposed generation capacity of up to 58 MW, would meet the average annual domestic requirements of around 34,000 households.

If consented, the wind farm would establish a local benefit fund of £5,000 per MW each year for the lifetime of the project, which would provide up to £290,000 each year to support local organisations, events and community activities.

In addition, EDF Renewables has underlined its commitment to shared ownership of the project and would allow local communities to purchase shares in the project.

The Cloich Forest Wind Farm online exhibition can be accessed via a link provided on the project page on the EDF Renewables website at www.edf-re.uk/our-sites/cloich

ENDS

***Based on load factors and latest conversion figures provided by the Digest of UK Energy Statistics and BEIS**

Issued on behalf of EDF Renewables by MHW PR. For details please contact Ian Watson on 0191 261 2773 or 07730 614727 or via ian@mhwpr.co.uk.

Notes to Editors:

EDF Renewables UK and Ireland is a joint venture between two companies, EDF Energy (EDF's UK business) and EDF Renewables Group (EDF's global renewables business). EDF Renewables Group has more than 25 years' experience in delivering renewable energy projects in more than 20 countries around the world. EDF Renewables UK and Ireland has an operating portfolio of 37 wind farms and one of the UK's largest battery storage units (together totalling almost 1GW) and are providing some of the much needed new affordable, low carbon electricity across all technologies. We have an expanding renewables portfolio with almost 4GW of projects in planning and development across wind, battery and solar and 600MW currently under construction. We have offices in Edinburgh, Durham, London and Dublin.

What will be the benefits to the local community?

The wind farm will be an important source of low carbon electricity, contributing to Government targets for increased renewable energy generation and reduced CO₂ emissions.

It is the intention of EDF Renewables to establish a local community benefit fund linked to the wind farm which will be in place once it becomes operational. The fund value would be in line with the recommended Scottish Government rate - currently £5,000 per MW each year for the lifetime of the wind farm.

The fund would be designed to meet specific local objectives and would be administered locally at arms' length from EDF Renewables in line with Scottish Government guidance.

EDF Renewables also supports the principle of community investment in our wind farms. If community groups or other stakeholders have an interest or view on this, we would welcome your feedback.

EDF Renewables

EDF Renewables is part of one of the world's largest electricity companies and our investment in innovation in the UK is bringing down costs for consumers and delivering significant benefits for communities.

The EDF Renewables operating portfolio of 36 wind farms and battery storage units are providing some of the much-needed new affordable low carbon electricity in the UK.

Further information: www.edf-re.uk



Cloich Forest Wind Farm

Project update and new proposal

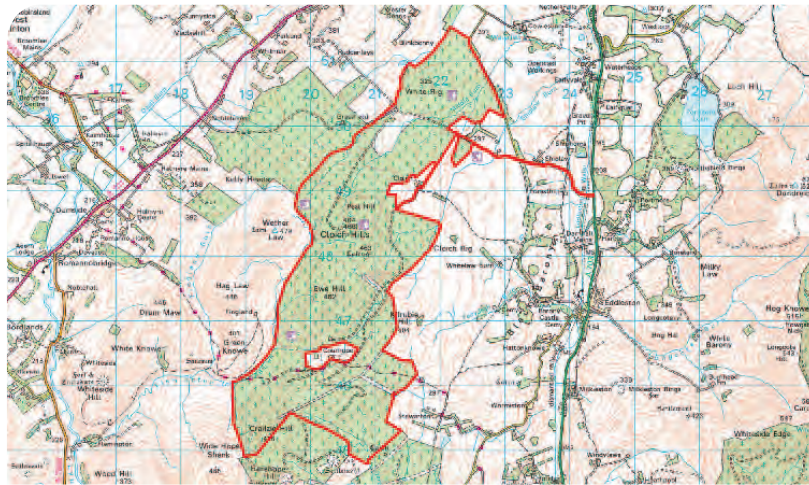
Public consultation events

Tuesday, 18th February 2020
Newlands Activity Centre,
Romanno Bridge,
3.00pm - 7.00pm

Wednesday, 19th February 2020
Eddleston Village Hall,
Eddleston,
3.00pm - 7.00pm



Cloich site plan



Reproduced from Ordnance Survey digital map data © Crown copyright 2019.
All rights reserved. License number 100048606

Site Boundary

The proposal

EDF Renewables is developing a new layout for the Cloich Forest Wind Farm.

Consent for a wind farm at Cloich Forest was granted in July 2016 by the Scottish Government's Energy Consents Unit (ECU) following a submission by the previous owners, Partnership for Renewables (PFR).

EDF Renewables bought the development portfolio of PFR in 2017 and is now reviewing the project to improve the productivity of the wind farm.

The consented wind farm has an 18 turbine layout with a vertical blade tip height of 115m. EDF Renewables is now looking at increasing the productivity from the site with fewer, larger turbines.

Local public exhibitions will be attended by members of the development team with whom you can discuss the project. We would be glad to introduce the proposed changes to you and hear your comments on the early-stage developments.

At the events you will have the opportunity to complete questionnaires and provide less formal feedback which is often invaluable for improving the design of a wind farm.

www.edf-re.uk

Your questions answered

Why hasn't the wind farm been built yet?

Since the application for the Cloich Forest Wind Farm was first submitted by Partnership for Renewables (PFR) in 2012, and consented in 2016, there have been changes in the ownership of the project and turbine technology has improved.

EDF Renewables purchased the PFR development portfolio in 2017 and is now undertaking a design review in order to make the wind farm more productive.

What is now being proposed?

The process of re-designing the wind farm is still at an early stage. A final design and turbine parameters will not be finalised until the Environmental Impact Assessment (EIA) process is at a more advanced stage.

However, our initial re-design of the wind farm is considering fewer turbines (potentially up to 14 turbines instead of 18) at an increased maximum height of up to 149.9m.

Because the installed capacity will still be over 50MW (previously consented at 54MW), a new Section 36 application will be made to the Scottish Government's Energy Consents Unit. They have issued a Scoping Opinion for the EIA which is available to download from their website www.energyconsents.scot

Why are you increasing the height of the turbines?

Commercial turbines are generally becoming larger with greatly improved generation outputs that can be achieved from an increased rotor size, alongside a significant reduction in electricity generation costs.

What information will you produce to help everyone understand how any new project will compare to the visual appearance of the approved wind farm?

As part of the re-design, we have recently issued an Environmental Impact Assessment Scoping Report that sets out the various environmental topics that will be considered. The EIA will include a landscape and visual impact assessment which will include photomontage and wireline illustrations.

What is the point of these exhibitions?

We will ensure that local residents are informed of our plans as we move forward and the exhibitions provide an opportunity for anybody interested in the wind farm to discuss the design and planning process with our development staff and to provide project feedback at an early stage in the re-design.

When we have a final design, we will hold further public exhibitions in 2020. Questionnaires will be available at these events to enable everyone who attends to provide feedback and to help inform our proposal.

CLOICH FOREST WIND FARM

How to visit the virtual exhibition

from 16th April to 26th April

1. The online exhibition will be accessible from the Cloich Forest Wind Farm project page on the EDF Renewables website. Visit: www.edf-re.uk/our-sites/cloich
2. You can provide any comments or find out how to get in touch with us in the virtual exhibition hall!
3. You can also email us directly with any comments or questions to Richard.Fisher@edf-re.uk
4. You can find out how to formally register your views on the Section 36 application for consent. An application for permission to build the wind farm is expected to be made by the end of May 2021 to the Scottish Government's Energy Consent Units (ECU). When this happens, a formal consultation period will begin to allow all consultees, including local residents, to make representation directly to the ECU or to the local planning authority (LPA). The LPA will also be asked for their views on the scheme by the ECU.

EDF RENEWABLES

EDF Renewables UK and Ireland is a joint venture between two companies, EDF Energy (EDF's UK business) and EDF Renewables Group (EDF's global renewables business).

EDF Renewables Group has more than 25 years' of experience in delivering renewable energy projects in more than 20 countries around the world.

EDF Renewables UK and Ireland has an operating portfolio of 37 wind farms and one of the UK's largest battery storage units (together totalling almost 1GW) and we are providing some of the much needed new affordable, low carbon electricity across all technologies.

We have offices in Edinburgh, Durham, London and Dublin.

FORESTRY AND LAND SCOTLAND

The proposed Cloich Forest Wind Farm development is on the national forests and land managed by Forestry and Land Scotland (FLS) on behalf of Scottish Ministers. EDF Renewables and FLS are working together to ensure the best outcome for the proposed development.

The Scottish Government continues to support generation of electricity from renewable sources as part of its strategy for improving sustainability, benefiting communities, reducing the effects of climate change.

More details at www.forestryandland.gov.scot



EDF Renewables
Atria One
144 Morrison Street
Edinburgh
EH3 8EX

12th April 2021

Dear Resident

Proposed Cloich Forest Wind Farm - Online Exhibition

I am writing to update you on our proposed plans for the Cloich Forest Wind Farm, situated on the commercial forestry site managed by Forestry and Land Scotland (FLS), west of Eddleston Village in the Scottish Borders.

Since hosting our exhibitions in February last year and listening to the views of local residents and stakeholders, we have continued to develop our design for the site. Our new proposal has considered the feedback received from residents and consultees and has sought to produce a viable project which is both environmentally and technically robust. The details of the changes made to the earlier site design that form our new proposal are included in this leaflet.

In addition, we will also be providing more comprehensive information on the proposed wind farm in a virtual exhibition, which will be available for viewing online from 16th to 26th April.

Naturally, we would have preferred to have been able to host another round of public information days at local venues, but Covid-19 restrictions mean that we are unfortunately unable to do so.

Nevertheless, we have attempted to include the full breadth of information that would normally be available at the exhibitions in an online environment and this includes 3D visualisation of the proposed wind farm.

Full details of how to access the exhibition and ask us any questions are provided on the back page of this leaflet.

As well as contacting us with any comments on the proposal at this stage, you will also have the opportunity to make your views known to the planning authorities once the formal application has been made. Full details of this process are also provided in this leaflet.

I very much hope that this information and our online exhibition is of interest to you.

Yours sincerely


Richard Fisher
Onshore Wind Development Manager

Richard.Fisher@edf-re.uk





www.edf-re.uk


* Load factors based on the five year rolling averages on unchanged configuration basis using Table 6.5d of Digest of UK Energy Statistics – latest figures as per July 2019 release
** Calculation based on BIGGAR (RenewableUK (2015) Onshore Wind: Economic Impacts in 2014)



CLOICH FOREST
Wind Farm

 **12**
turbines on site

 **Approx 58MW**
generating capacity

 **Around 34,000**
homes supplied annually*

PROJECT UPDATE

EDF Renewables shared details of its proposed new Cloich Forest Wind Farm at public consultation events held in February 2020.

Consent for an 18 turbine wind farm on this site was originally granted by the Scottish Government in July 2016.

At the events last year we explained how using fewer, larger turbines on the site could meet the energy needs of more households and make a bigger contribution to reducing CO₂ emissions as part of enhanced Government climate change targets.

The initial design we presented in February considered a reduction in the original 18 turbines planned for the site to up to 14, at an increased maximum height of up to 149.9 metres to rotor blade tips.

Since February we have continued our environmental assessments on the site alongside stakeholder feedback and we have now developed a new final design for the site.

Comments from visitors to the February exhibitions and responses to the existing consented scheme have been key factors in the new design strategy.

The purpose of the online exhibition is to share this final design with you, to answer any questions you may have and to let you know how you can make your opinions known as the project progresses through the consenting process.

UPDATED PROPOSAL

- Incorporates 12 turbines on the site
- Turbines have a maximum height to rotor blade tip of 149.9 metres.
- Will have a generation capacity of around 58MW
- The reduction in turbine numbers allows for greater spacing between the proposed turbines, creating a more balanced array of turbines from key viewpoints.

New Proposed Layout



April 2021



Site Location Plan

 Development Site Boundary

DESIGN CHANGES

Since the exhibitions in February, environmental surveys and assessments have continued on site, and responses from the public and statutory consultees have fed into the continued evolution of the layout for the wind farm.

In particular, potential effects on landscape, ecology, hydrology and noise receptors have all been key elements of the overarching design strategy that has now produced a final layout proposal.

We have also undertaken a detailed review of local hydrological features and private water supplies, including a comprehensive private water supply risk assessment (PWSRA) that has been used to inform the design of the development through all stages of the EIA process.

Minimising the potential for noise impacts to arise at nearby properties has also been a key development consideration and the predicted noise levels associated with the proposed new development will comply with conditioned noise levels for the consented wind farm.

EDF Renewables has worked closely with Forestry and Land Scotland to ensure that the wind farm can be built and operated with minimal disruption to forestry activities. Where possible existing forestry tracks have been used in the wind farm design to ensure that the development footprint and forestry loss are minimised.

WHAT HAPPENS NEXT

We anticipate that an application to the Scottish Government's Energy Consents Unit (ECU) for permission to build the wind farm under Section 36 of the Electricity Act will be submitted at the end of May 2021.

When the application is submitted, there will be a 28 day consultation period for consultees (including local residents) to make representations directly to the Scottish Government via the ECU website, ahead of any decision being taken.

The submission of the Section 36 application will be advertised in Public Notices in the local newspapers and copies of the planning application will be available online for public viewing.

COMMUNITY BENEFITS

If consented, the Cloich Forest Wind Farm would deliver a community benefit fund in line with the Scottish Government guidance which is currently £5,000 per MW. Based on a generating capacity of around 58MW, the proposed wind farm would provide a local benefit fund of up to £290,000 each year for the lifetime of the wind farm.

Arrangements for the administration of the fund would be agreed with residents, local community councils and development trusts. The locally managed fund would be structured to meet local priorities, support local groups and pay for local improvements and community initiatives.

We have examples of how wind farm benefit funds are used to support local community activities across Scotland and would be happy to share these with you at the appropriate time.


EDF Renewables supports the principle of community ownership in wind farms and on completion of the wind farm, there will be an opportunity for the local community and FLS to invest in ownership of up to 25% of the wind farm.


Further details on the community ownership opportunity are provided in a separate leaflet available at the virtual exhibition.


LOCAL SUPPLY CHAIN

EDF Renewables' procurement strategy encourages local and regional contractors to participate in the project supply chain throughout the construction, operation and decommissioning of the wind farm.

CLOICH FOREST WIND FARM
Economic Benefits

 **Up to £290,000**
invested each year in a local community fund

 **Up to £8.7 million**
available in total over the lifetime of the wind farm

 **Around £9 million**
anticipated regional spend on construction and services**



Cloich Forest Wind Farm

Project update and new proposal

Public consultation events

Tuesday, 18th February 2020
Newlands Activity Centre,
Romanno Bridge,
3.00pm - 7.00pm

Wednesday, 19th February 2020
Eddleston Village Hall,
Eddleston,
3.00pm - 7.00pm

These exhibitions will provide details of EDF Renewables' proposed re-design of the Cloich Forest wind farm and give local residents the opportunity to provide feedback on the proposal.

www.edf-re.uk





Eagle handler, Douggle McKenna, holds Kasia the Golden Eagle, with Cubs, Moysa McLaughlin and Innes Reilly. Photos: Phil Wilkinson



Youngsters also been making eagle-inspired art

Soaring success as Innerleithen scouts are nominated for award

MEMBERS of Innerleithen Scout Group are flying high after being nominated in the National Youth Work Awards 2020. The young people were put forward for their work, in partnership with the South of Scotland Golden Eagle Project, to develop the first Golden Eagle Champion Award. Now the scouts will battle it out to win the Environment and Conservation category at the ceremony on March 12. Chris Kennedy, a volunteer from Innerleithen Scout Group, said: "We're excited that our amazing 'Golden Eagle

Champions' have been shortlisted for a Youthlink Scotland Award. "Wildlife experts at the South of Scotland Golden Eagle Project worked closely with our volunteers to develop a fun and adventurous activity programme. "Our project proved to be such a success, that hundreds more Scouts across the Scottish Borders and Dumfries and Galloway are about to learn about Golden Eagle conservation and wider raptor protection. "That kind of legacy makes us all very proud."

In order to achieve the Golden Eagle Award, the young people spent time learning about the raptors, how to build eyries, and even had the opportunity to meet a golden eagle. As part of the development, one of the Innerleithen Scouts members designed a badge for fellow Scouts to earn with the award. The success of the Golden Eagle Champions has been greatly supported by other environmental activists, including scout ambassador, and presenter, Steve Backshall. And in May 2019, the Innerleithen Scouts

featured on BBC's Landward, highlighting the Borders project. Philip Munro, community outreach officer for the South of Scotland Golden Eagle Project, added: "We are absolutely delighted to hear that the Innerleithen Scout Group has been shortlisted for a Youthlink Scotland Award. The future of conservation depends on initiatives like this that encourage young people to get involved and make a difference. Their support makes a huge contribution to helping to safeguard the future of iconic species like the golden eagle."

Hibernian offer High School goal with ticket deal

By Hilary Scott
Reporter
editorial@peebleshirenews.com

PEEBLES High have kicked off their first week back by teaming up with Hibs.

The Easter Road club are running a pilot programme to offer a fundraising opportunity to schools, community football clubs and charities.

And they have extended the invitation to the Peebles secondary school to take part in this fundraising through football known as 'Hibs Give Back'.

Hibernian FC is aware of how challenging fundraising can be and have created an exciting new initiative which will help Peebles High School raise funds with very little effort.

The group ticket sales scheme offers pupils, staff, parents/careers, friends, and families the opportunity to purchase tickets to attend home fixtures at Easter Road.

Hibernian will send Peebles High a unique link which will



Hibs boss Jack Ross. Photo: Adam Davy/PA Wire

then be emailed out so that this can be used to purchase match tickets online.

The week following the fixture, Hibs will establish the sales from the school via their unique link and return 50 percent of the net sales.

Hibernian FC are keen to work in partnership with Peebles High, which is the first school outwith Edinburgh to be invited to take part in the fundraising initiative, and is looking forward to building a relation-

ship with the school. Although some football fans may have allegiance to a different team, the school hopes those who like watching a game of footie will support the fundraising venture which will boost funds following the fire tragedy.

Donna Moretta, Depute Headteacher said: "We are delighted to have been approached by Hibs to work in partnership, especially as this has been an opportunity previously afforded to Edinburgh schools only.

"Fundraising can take a lot of organisation and effort but this initiative is really simple, people who enjoy a day out at the football can watch a Scottish Premiership match and raise money for the school at the same time. It's a win-win for football fans linked to Peebles High School, although we can't guarantee the result!"

The first fixture is on Saturday, February 22 Hibernian v Livingston.

Tickets can be purchased via the school website by using the unique link.

Cloich Forest Wind Farm

Project update and new proposal

Public consultation events

Tuesday, 18th February 2020
Newlands Activity Centre,
Romanno Bridge,
3.00pm - 7.00pm

Wednesday, 19th February 2020
Eddleston Village Hall,
Eddleston,
3.00pm - 7.00pm

[View our website](#) | [Get involved](#) | [Contact us](#)
[View our website](#) | [Get involved](#) | [Contact us](#)
[View our website](#) | [Get involved](#) | [Contact us](#)
[View our website](#) | [Get involved](#) | [Contact us](#)

Cloich Forest Wind Farm

Project update and new proposal

Public consultation events

Tuesday, 18th February 2020
Newlands Activity Centre,
Romanno Bridge,
3.00pm - 7.00pm

Wednesday, 19th February 2020
Eddleston Village Hall,
Eddleston,
3.00pm - 7.00pm

These exhibitions will provide details of EDF Renewables' proposed re-design of the Cloich Forest Wind Farm and give local residents the opportunity to provide feedback on the proposal.

www.edf-re.uk



Cloich Forest Wind Farm



Online exhibition & project update

EDF Renewables will be providing an update on its proposed new design for the Cloich Forest Wind Farm in an online exhibition.

The exhibition will include details of the final proposed layout for the wind farm, along with 3D visualisations, photomontages, plans and other details on the project. Visitors will also be able to ask questions and provide feedback on the plans.

The online exhibition will be available from 16th to 26th April and can be accessed from the Cloich project page of the EDF Renewables website at www.edf-re.uk/our-sites/cloich

www.edf-re.uk



Council reveals secret limit on electronic speed displays

By Mike Thomson
Reporter
editorial@peebleshirenews.com

DIGITAL traffic signs on 20mph roads across the Borders show a maximum speed of 28mph regardless of how fast a vehicle is going, a Freedom of Information (FoI) request has revealed.

The digital signs are often deployed as a traffic calming measure, alerting drivers to their speed in the hope that it will stop people travelling faster than the limit.

In an FoI request to Scottish Borders Council (SBC) lodged by George Winter, a number of questions were put to the local authority regarding the 28mph cut-off.

According to the council, the decision to make the maximum display speed "reasonable" was taken to avoid drivers attempting to achieve "the highest speed possible".

At the beginning of the FoI request, Mr Winter writes: "In Edleston, Peeblesshire, the traffic speed digital display indicator is set to display a maximum speed of 28mph for traffic entering the village, irrespective of vehicles' actual speed."

The request continues: "I wish to ask: Does the 28mph cut-off apply to all towns and villages using this system throughout the Scottish Borders?"

"When was this decision tak-

en?"

In response to Mr Winter's FoI, a council spokesperson wrote: "At this time yes, where there is a 20mph limit then the maximum speed that will be displayed will be 28mph."

"This decision was taken when the trial 20mph began to be rolled out."

The 20mph speed trial was rolled out by SBC in October as part of its Spaces for People scheme.

Mr Winter also asked to "view the correspondence" that informed the cut-off decision.

However, in SBC's response a spokesperson said: "This decision was taken by officers over [Microsoft] Teams meetings and there is no accompanying correspondence."

The council's spokesperson provided additional information in response to Mr Winter's FoI request.

"From past experience of the variable message signs and from discussions with other local authorities anecdotally there sadly appears to be a group of drivers who will intentionally aim to 'achieve' the highest speed possible from these electronic signs, hence the need to keep the displayed speed reasonable so that an unreasonable 'target' speed is not displayed," said the spokesperson.

"At this time there does not appear to be a great deal of scientific data available on the effectiveness of differing threshold



A Freedom of Information request to the council has revealed details about digital speed displays on 20mph roads

speeds and it is likely that the Traffic and Road Safety Team at Scottish Borders will consider a form of evaluation of different threshold speeds on overall driver behaviour; however at present there is not capacity within the section to do so."

Peeblesshire motorists warned about 3 weeks of road repairs

PEEBLESSHIRE motorists are being warned about roadworks on a major route over a three-week period.

Officials say work on the A702 between Melbourne Crossroads and Easter Howgate, in neighbouring Midlothian, will begin on Monday (April 12), with work to be completed by May 1.

The work will be carried out by BEAR Scotland, with different parts of the A702 closed overnight between 7.30pm and 6am.

Tommy Deans, BEAR Scotland's south east network manager, said: "These surfacing improvements across sections of the A702 will address and repair defects in the road surface, such as potholes or cracks. To help minimise delays we've planned the works to take place during night-time hours."

Between April 12-20, the road will be closed overnight between Melbourne Crossroads and Hillhead Junction.

A diversion will be signposted via Penicuik, the A721, A72, A701 and A703, adding an estimated 10 minutes.

On the nights of April 21, 22 and 23, the road will be closed between Nine Mile Burn and Hillhead Junction. Diversions will be in place via Penicuik, the A766, A701 and A703, adding seven minutes to affected journeys.

Then, on the nights across April 26-30, temporary traffic lights with a 10mph convoy system will be in place at Easter Howgate.

Our Scottish Borders
Your community
www.scotborders.gov.uk



Town and Country Planning (Development Management Procedure) (Scotland) Regulations 2013
Notice of Applications to be Published in a Local Newspaper Under Regulation 20(1)
Planning (Listed Buildings and Conservation Areas) (Scotland) Act 1997

Applications for planning permission, listed building consent and conservation area consent listed below together with the plans and other documents submitted with them may be examined at Council Headquarters, Newtown St Boswells between the hours of 9am and 4.45pm Monday to Thursday and 9am and 3.30pm on Friday.

Written comments may be made to the Service Director – Regulatory Services, Scottish Borders Council, Newtown St Boswells TD6 0SA within 21 days from the date of the publication of this notice. Alternatively, representations can be made online by visiting our web site at <http://eplanning.scotborders.gov.uk/online-applications/>. It is also possible to visit any library and use the Planning Public Access system to view documents. To do this, please contact your nearest library to book time on a personal computer.

Please state clearly whether you are objecting, supporting or making a general comment. Under the Local Government (Access to Information) Act 1985, representations may be made available for public inspection.

Ref No	Proposal	Site
21/00465/FUL	Alterations to garage to form additional accommodation and erection of new garage	Bellisle, Frankscroft, Peebles
21/00473/FUL	Change of use from restaurant and alterations to form 2 no flats	Old Bakehouse, Main Street, West Linton
21/00475/FUL	Erection of replacement dwellinghouse and garage	Grange Loan, West Linton

Scottish Borders – the place to live and work

Cloich Forest Wind Farm



Online exhibition & project update

EDF Renewables will be providing an update on its proposed new design for the Cloich Forest Wind Farm in an online exhibition.

The exhibition will include details of the final proposed layout for the wind farm, along with 3D visualisations, photomontages, plans and other details on the project. Visitors will also be able to ask questions and provide feedback on the plans.

The online exhibition will be available from 16th to 26th April and can be accessed from the Cloich project page of the EDF Renewables website at www.edf-re.uk/our-sites/cloich



www.edf-re.uk

Cloich Forest Wind Farm



Welcome to the

Cloich Forest Wind Farm Community Consultation Day

Welcome to the EDF Renewables consultation event.

We are in the early stages of developing a proposal to re-design the Cloich Forest Wind Farm layout. After you have viewed the information displays, we invite you to complete a short questionnaire before you leave.

Comments and Questions

The consented Cloich Forest Wind Farm is being re-designed with an increase in turbine height and a reduction in turbine numbers.

If you have any comments or would like to know more, you can provide feedback in the questionnaires. The EDF Renewables staff are here to answer any questions you may have.



Site Boundary
Reproduced from Ordnance Survey Digital Map data © Crown Copyright 2008. All rights reserved. License number 100048100.

Forestry and Land Scotland

The Cloich Forest Wind Farm development is on the national forests and land managed by Forestry and Land Scotland (FLS) on behalf of Scottish Ministers. EDF Renewables and FLS are working together to ensure the best outcome for such a development at Cloich Forest.



About Us

EDF Renewables is a joint venture between EDF Renewables Group (EDF's global renewable business) and EDF Energy (EDF's UK generation business). We have a UK operating portfolio of 33 onshore wind farms, 2 offshore wind farms and one of Europe's largest operational battery storage units, a technology which is making renewables a more stable part of the energy mix. www.edf-re.uk



Cloich Forest Wind Farm



Project Background

An 18 turbine, 54MW wind farm was consented at Cloich Forest in 2016. Following a review of the consented project, EDF Renewables has explored options to revise the layout to enable the use of taller turbines. This would also include a reduction in the number of turbines to a maximum of 14.

Consented wind farm layout



Development consent for the original wind farm was granted in 2016 by the Scottish Government's Energy Consents Unit (ECU) following a submission by the previous owners, Partnership for Renewables (Pfr). The consented tip height of the turbines is 115 metres.

EDF Renewables acquired Pfr's development portfolio in 2017. Since then, a thorough review of the project has been undertaken to look at ways of increasing its productivity.

The process of re-designing the wind farm is still at an early stage. A final layout and the turbine parameters will not be chosen until the Environmental Impact Assessment (EIA) process is at a more advanced stage. We have recently informed EIA consultees that we are now considering maximum tip heights of up to 149.9m.

A final preferred layout with confirmed turbine numbers will be determined when ongoing technical and environmental studies are completed.



Cloich Forest Wind Farm



New Proposal

The re-design of the Cloich Wind Farm is at a very early stage. Whilst some environmental information from the original application EIA is unlikely to have changed, a new suite of environmental studies will be undertaken during spring and summer 2020 to inform the ongoing design process.

The re-designed wind farm is expected to include turbines with a maximum tip height of 149.9m. A new application is expected to be ready for submission in late autumn 2020.



Site Boundary Indicative Turbine Position
Reproduced from Ordnance Survey digital map data © Crown copyright 2020. All rights reserved. Licence number 100048606

With increases in turbine height and rotor diameter, the spacing between turbines also tends to increase.

The original scoping layout of 14 turbines uses the separation distances necessary for 145m tall turbines. Subsequent to the issue of the scoping report, we have also considered 149.9m tip turbines. If implemented, these would require slightly greater separation distances and this is likely to reduce the overall turbine numbers further.

A mixture of turbine heights (none greater than 149.9m) will

also be considered as the design develops. The 12 turbine layout that has been circulated as an update to the EIA scoping exercise and is used (above) in this exhibition is an illustrative layout that makes use of these taller turbines and their increased separation distances.

Overall turbine numbers in the final application will depend on the dimensions of the final turbines chosen for the wind farm and the environmental constraints and sensitivities identified during the forthcoming EIA process.

The design of the new application will be environmentally led. The intention is to enable the use of more productive turbines to improve the energy production and yield of the wind farm without adding to the environmental impacts that were anticipated to arise from the consented development.





Environmental Impact Assessment

The application for a revised layout requires a new Environmental Impact Assessment (EIA) to be undertaken.

An EIA records the baseline environmental conditions for a development site and predicts how those characteristics will be affected by the construction, operation and decommissioning of the wind farm.

The baseline environmental conditions of the wind farm site also identify areas of environmental sensitivity which restrict where turbines can and cannot go, so the EIA process is a key component of the wind farm design.

The planning principle for a wind farm has been established in this location by the current consent which was granted following examination at a Public Local Inquiry.

For the new application, the EIA will update the previous assessments with new baseline studies and assess the impact of the revised wind farm design on a range of environmental issues, including:

Landscape and Visual

The Landscape and Visual impact Assessment (LVIA) identifies the effects of new developments on views and on the landscape. The assessment will be accompanied by visualisations (photomontages) that show what the final proposal would look like in the landscape from surrounding viewpoints.

The proposed changes in turbine dimensions and the layout will mean that updates to the landscape and visual assessment are required. Cumulative landscape impacts with other existing and proposed wind farms will also be assessed in the EIA.





Environmental Impact Assessment

The application for a revised layout requires a new Environmental Impact Assessment (EIA) to be undertaken.

Noise

A revised layout using different heights of turbine has the potential to change the noise emissions and will be modelled and assessed to ensure that it will comply with national guidelines relating to wind farms.

Hydrology

Detailed private water supply studies have commenced and consultation is underway with local residents to inform the assessment. If you believe that your private water supply is sourced from the wind farm area, please make the team here today aware and we will take your details for further consultation. There is likely to be a reduction in the overall footprint of the wind farm due to the reduction in turbine numbers from the consented wind farm.

Access to the site

Due to the larger turbine size we will carry out additional 'pinch point' analysis along the turbine delivery route. Any changes in volumes to construction traffic accessing the site during the construction and operational phases of the development will be considered in the assessment.

Archaeology and Cultural Heritage

The project design will seek to avoid any physical impact on the archaeological features in and around the site. Whilst there is expected to be a limited change to direct effects on known features, due to the reduced number of turbines and associated footprint, the EIA will update the direct and indirect effects on archaeology.

Changes to the setting of cultural heritage features will also be assessed in the EIA, supported by visualisations from key locations agreed in advance with Historic Environment Scotland and the local council.

Ecology and Ornithology

The ecology and ornithology survey data collected for the consented wind farm is being updated. Ecology and ornithology surveys are underway and the environmental effect of implementing the development will be assessed within the EIA.

Land Use, Socio Economics and Recreation

Effects on land use, socio-economics and recreation will be updated in the EIA.





Community Involvement & Support

EDF Renewables would establish a local community benefit fund when the wind farm becomes operational.

The fund value would be in line with the recommended Scottish Government rate, which is currently £5,000 per MW installed capacity each year for the lifetime of the wind farm.

The fund would be designed to meet specific local objectives and would be administered locally at arms' length from EDF Renewables in line with Scottish Government guidance.

Community ownership

EDF Renewables supports the principle of community investment in our wind farms and would welcome the views of local community groups on this.

Community liaison

As part of our public consultation we will be liaising with various stakeholders including local residents and Community Councils. We will be hosting further exhibitions before any planning application is submitted.

Supply chain opportunities

If the application is successful, our contracting strategy encourages packages of work on the construction of the wind farm to be made available to local suppliers and contractors.

Enquiries and more details:

Development updates will be available via the wind farm project pages at www.edf-re.uk. Any enquiries on the scheme can be directed by email to info@edf-re.uk

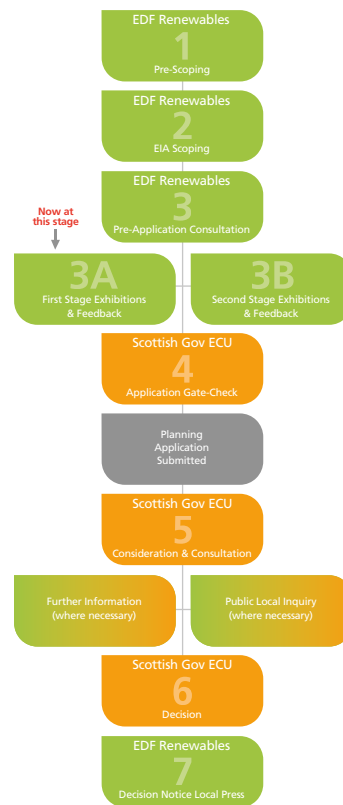


Cloich Forest Wind Farm



What Happens Next

As the new proposal for the Cloich Forest Wind Farm will have a generating capacity of over 50MW, the application will be made to the Scottish Government's Energy Consents Unit (ECU) under Section 36 of the Electricity Act 1989.



EDF Renewables has sought the views of consultees on which topics should be studied in the Environmental Impact Assessment (EIA). The Scottish Government's Energy Consents Unit has now issued a Scoping Opinion and environmental studies are underway.

The wind farm layouts shown at this exhibition are indicative only, reflecting the early stage that we are at in the design process. Updating the survey work for most EIA topics is ongoing and the wind farm design will progress as our understanding of the environmental characteristics of the site further develop. It is anticipated that an application will be submitted in autumn 2020 and additional public exhibitions will be held prior to submission. At that time, the EIA will be complete and a final layout, informed by the environmental studies, will have been chosen.

When the application is submitted, hard copies of the Environmental Report will be distributed to community facilities for public viewing. Electronic versions will be available to download from the project website and the Scottish Government website. Following submission there will be a 28 day consultation period during which consultees and members of the public can make representations to the Scottish Government to help inform their determination of the application.





Thank You For Your Interest Today

EDF Renewables is committed to building a sustainable future through wind power and other renewable technologies in partnership with local communities.



Development updates will be available via the wind farm project pages at www.edf-re.uk

Enquiries on the scheme can be directed by email to info@edf-re.uk or by telephone to 0191 261 2773.



We are proud to be investing in Scotland's communities.



Cloich Forest Wind Farm



Welcome to the

Cloich Forest Wind Farm Online Exhibition

We have designed this website to look like a village hall and we hope you find the materials presented here are informative and interesting.

As you stroll around the village hall, click on the different materials to read about different aspects of the project. Here you will find:

- Information panels
- Virtual wind farm visualisation
- Maps and plans
- Photomontages
- Press release and leaflets
- Feedback form
- How to get in touch

This online information event will be available from 16th - 26th April and we would invite you to send us your feedback during this period.

Click the X in the top right hand corner or click anywhere outside this panel to enter the online exhibition.

Thank you for your interest in the project.

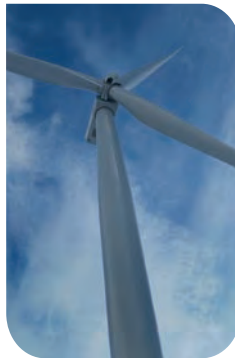


Cloich Forest Wind Farm



Cloich Forest Wind Farm Online Exhibition and Information Event

EDF Renewables welcomes you to this online information event to provide you with the latest information on the Cloich Forest Wind Farm development proposal.



Site Boundary
Reproduced from Ordnance Survey digital map data © Crown copyright 2021. All rights reserved. Licence number 100038060.

EDF Renewables

EDF Renewables has an operating portfolio of 37 wind farms and one of the UK's largest battery storage units (together totalling almost 1GW) and we are providing some of the much needed new affordable, low carbon electricity across all technologies. We have offices in Edinburgh, Durham, London and Dublin.



Cloich Forest Wind Farm



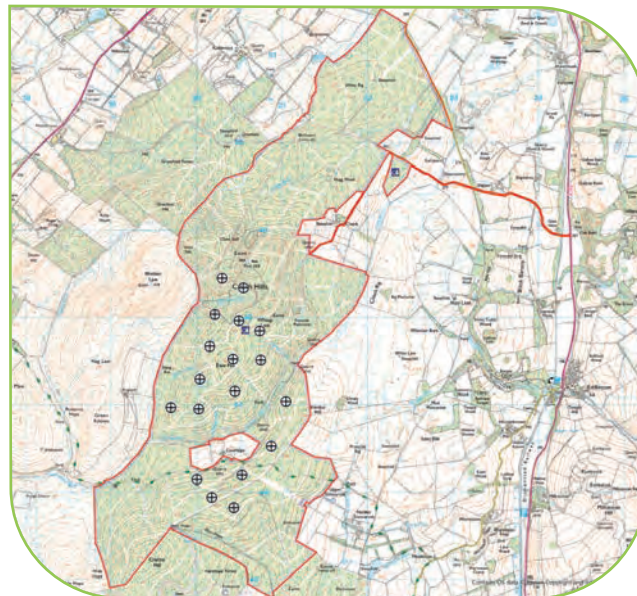
Project History

EDF Renewables is developing a new layout for the Cloich Forest Wind Farm, located west of Eddleston in the Scottish Borders.

Consent for a wind farm in Cloich Forest was granted in July 2016 by the Scottish Government following a submission by the previous developer, Partnership for Renewables (PFR). EDF Renewables bought the development portfolio of PFR in 2017.

The original consent was for the development of a wind farm comprising 18 turbines of up to 115m in height to the blade tip (vertical tip height).

Consented wind farm layout



Site Boundary Consented Turbine
Reproduced from Ordnance Survey digital map data © Crown copyright 2021. All rights reserved. Licence number 100048606

Since acquiring the project from PFR, EDF Renewables has been examining ways to increase the productivity of the wind farm and reduce the cost of power generated by the site.

Turbine technology has improved greatly since the original application was made and it is now possible to considerably increase production with larger turbines. This enables the wind farm to produce more low carbon electricity at a lower cost, meeting the energy needs of more households and making a bigger contribution to reducing CO₂ emissions as part of enhanced Government climate change targets.



Cloich Forest Wind Farm



Response to our Initial Revised Proposal

In February 2020 we presented information on our initial revised layout that proposed a reduction in the number of turbines from 18 to up to 14, and an increased tip height of up to 149.9 metres.

Initial revised layout



Site Boundary Indicative Turbine Position
Reproduced from Ordnance Survey digital map data © Crown copyright 2021. All rights reserved. License number 100048606

The exhibitions were held on the 18th and 19th of February 2020 in Romanno Bridge and Eddleston, respectively.

Over the two days of exhibitions a total of just over 100 people attended and 49 questionnaires were completed.

Since the exhibitions, environmental surveys and assessments have continued on site, and responses from the public and statutory consultees have fed into the continued evolution of the layout for the wind farm.

In particular, potential effects on landscape, ecology, hydrology and noise receptors have all been key elements of the overarching design strategy that has now produced a final layout proposal.

The design and layout of the new application for Cloich Forest Wind Farm seeks to use more productive wind turbines, whilst balancing the environmental impacts associated with the consented wind farm.



Cloich Forest Wind Farm



Final Layout Proposal

After reviewing feedback to our initial proposal, and taking into account key environmental and technical considerations, we have now developed an updated layout proposal for submission.

New proposed layout



Reproduced from Ordnance Survey digital map data © Crown copyright 2021. All rights reserved. License number 100048606
Site Boundary Proposed Turbine Location

This new layout comprises:

- 12 turbines on the site
- A generation capacity of approximately 58MW
- Turbine tip heights of up to 149.9 metres

The proposed wind farm would produce enough low carbon electricity to meet the average annual domestic needs of around 34,000 homes each year* and will make a substantial contribution to reducing CO₂ emissions**.

In making these changes we have developed a layout which takes into account a variety of environmental factors, including nearby residences and private water supplies, amongst others.

The increase in tip height has enabled a reduction in the number of turbines. This reduction allows for greater spacing between the proposed turbines, in-turn creating a balanced array of turbines from key viewpoints.

Other environmental factors that have been key drivers affecting the design following feedback and survey work are detailed in the Environmental Impact Assessment banners included in this exhibition.



* Load factors based on the five year rolling averages on unchanged configuration basis using Table 6.5d of Digest of UK Energy Statistics – latest figures as per July 2019 release
** Based on conversion figure provided by BEIS and the Digest of UK Energy Statistics

Cloich Forest Wind Farm



Environmental Impact Assessment

The full EIA Report will be available to download from the project page of the EDF Renewables website (www.edf-re.uk) when the application is submitted.

The EIA records the baseline environmental conditions for a development site and how those characteristics will be affected by the construction, operation and decommissioning of the wind farm. The EIA considers the potential environmental effects on a full range of issues and technical matters, including:

Landscape and Visual Impact

A thorough landscape and visual assessment will be included as part of the new Section 36 application. The Landscape and Visual Impact Assessment (LVIA) identifies the effects of new developments on views and on the landscape. The assessment will be accompanied by visualisations (photomontages) that show what the final proposal would look like in the landscape from surrounding viewpoints.

These viewpoints have been agreed with the planning authorities and other stakeholders to best represent the area surrounding the site.

We have also prepared a 3D model to generate visualisations of the wind farm from any location. Due to COVID restrictions, we cannot present this to you in person, but we have provided a streamlined online version of the tool for you to view as part of this exhibition.

If you would like to see visualisations from this model at any particular location, please get in touch via the 'contact us' section and share the location and/or co-ordinates of where you want the view to be taken from. We will then send you an image of the view from that location by email.

Ecology

Extensive protected species surveys have been undertaken across the site and confirmed some presence of badger, otter and pine martin. Low levels of bat activity were also recorded across the site with common pipistrelle and soprano pipistrelle the most commonly recorded species. A detailed habitat survey was also completed in order to highlight any sensitive habitats that should be avoided during construction. Through careful site design, mitigation, and good practice, no significant negative effects on these ecological features are predicted.

Ornithology

Ornithology surveys were undertaken to identify what bird species use the site throughout the year and also to record their flight patterns and breeding behaviour. The design process for the current layout carefully considered ornithological sensitivities by avoiding historic nest locations of key species. Furthermore, by taking into consideration the flight behaviour of these key species, the risk of disturbance, displacement and collision has been kept to a minimum.



VP06 Core path near Eddleston



Cloich Forest Wind Farm



Environmental Impact Assessment

Forestry

Close liaison with Forestry and Land Scotland has been undertaken to ensure that forestry felling requirements associated with the siting of turbines and buffering zones has been minimised.

Noise

Reducing any noise effects on nearby residential properties has been a key development consideration. Throughout the design process, detailed modelling exercises have been undertaken for the various layout iterations to ensure that operation of the wind farm would comply with the noise condition applied to the existing Cloich Forest Wind Farm consent.

Traffic and Transportation

Vehicle movements to/from the site will consist of some abnormal vehicle loads, notably the turbine components. Turbine loads will exit Grangemouth port and join the M9 southeast bound, then merging onto the M8, and the A720 City of Edinburgh Bypass. Turbine loads will continue along the A720, joining the A7 and head southbound. From here turbine loads will navigate A and B roads, eventually leading onto the A703. Turbine loads will travel southbound on the A703 until the main site access junction with the D17 Road. Advance notice will be provided for all abnormal load deliveries to the site.

Cultural Heritage

The new wind farm design has been developed to avoid direct effects on known archaeological remains within the site. From scoping, the number of turbines has been reduced and the layout refined to minimise changes to the setting of designated heritage assets, most notably nearby hill forts to the east and south along the Meldon, Eddleston, and Tweed Valleys.



The full EIA Report will be available to download from the project page of the EDF Renewables website (www.edf-re.uk) when the application is submitted.



Cloich Forest Wind Farm



Hydrology and Private Water Supplies

Detailed private water supply studies have been undertaken as part of our consultation with local residents to inform the assessment of the site.

As part of this approach we have undertaken a detailed assessment of local hydrological features and private water supplies. To ensure that the private water supply risk assessment (PWSRA) is robust the following steps have been taken:

- Reviewed information submitted as part of the previous planning application;
- Undertaken consultation with Scottish Borders Council, Scottish Environment Protection Agency (SEPA), and local residents regarding the methodology of the PWSRA;
- Sent out PWS questionnaires and collated responses;
- Reviewed information provided by residents in relation to land use and the local hydrology of the area, and
- Undertaken site walkovers and visited properties, where possible.

The information gathered through the PWSRA methodology was used to inform the design of the proposed development through all stages of the EIA process.



Library photo

The full PWSRA will be set out in the Hydrology chapter of the EIA Report and will be available to download from the project page of the EDF Renewables website (www.edf-re.uk) when the application is submitted.

Following a full assessment of hydrological interests, including private water supplies, it is not anticipated that any significant effects will occur as a result of the development in relation to hydrology and hydrogeology.



Cloich Forest Wind Farm



Community Involvement & Support

If successful with the new application, EDF Renewables would establish a local community benefit fund when the wind farm becomes operational.

The fund value would be in line with the recommended Scottish Government rate, which is currently £5,000 per MW installed capacity each year for the lifetime of the wind farm.

The fund would be designed to support local objectives and would be administered locally at arms' length from EDF Renewables in line with Scottish Government guidance.

Community Ownership

EDF Renewables supports the principle of community investment in our wind farms and would welcome the views of local community groups on this.

On completion of the wind farm, there will be an opportunity for the local community and FLS to invest in ownership of up to 25% of the wind farm. Further details on the community ownership opportunity are provided in a leaflet available at this virtual exhibition.

Community Liaison

As the project approaches construction, a Community Liaison Group would be set up to meet on a regular basis with local community representatives. This would provide a forum to share updates and to answer any questions on the progression of the scheme into construction.

Supply Chain

If the application is successful, our contracting strategy encourages packages of work on the construction of the wind farm to be made available to local suppliers and contractors.

Project updates will be available on the Cloich Forest project page of the EDF Renewables website at www.edf-re.uk
Enquiries can be made by completing the feedback form in this exhibition or by email to Richard.Fisher@edf-re.uk

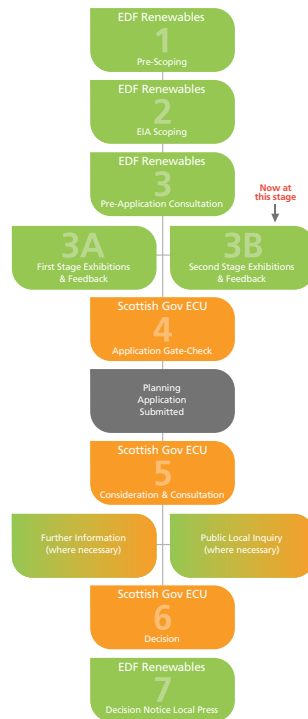


Cloich Forest Wind Farm



What Happens Next

As the new proposal for the Cloich Forest Wind Farm will have a generating capacity of over 50MW, the application to build and operate the wind farm will be made to the Scottish Government's Energy Consents Unit (ECU) under Section 36 of the Electricity Act 1989.



Our initial plans for the site were shared at the exhibitions last year. Since then further investigations have been made and a final layout for the wind farm has now been developed. It is anticipated that an application based on the current layout shown at this exhibition will be submitted towards the end of May 2021.

Once the application is submitted and accepted by the ECU, it will be advertised in Public Notices in local newspapers. The EIA Report will be made available for public viewing. If COVID-19 restrictions remain in place, rather than printed copies of the EIA, electronic versions of the report will be available to download from the project website and the Council and ECU planning portals.

Following submission there will be a 28 day consultation period during which consultees, and members of the public, can make representations to the Scottish Government and the local planning authority to help inform their determination of the application.

You will be able to find the project and make representations by searching 'Cloich Forest' on the respective websites:

Energy Consents Unit
www.energyconsents.scot/ApplicationSearch.aspx

Scottish Borders Council
www.scotborders.gov.uk/info/20050/planning_applications



Cloich Forest Wind Farm



Additional Information or Questions?

How to get in touch

We value your feedback and would be very pleased to hear from you. If you would like to make a comment or ask a question, please complete and submit the online feedback form available at the exhibition.

Alternatively, you can contact us via email and we will get in touch with you:

- Richard.Fisher@edf-re.uk
- Also, when the planning application is submitted to the Energy Consents Unit, there will be a 28 day consultation period to enable consultees and local residents to make representations directly to the Scottish Government or the local planning authority.





Have Your Say: Pre-Application Consultation

New application for Cloich Forest Wind Farm

EDF Renewables would like to hear your views on the new proposals for Cloich Forest Wind Farm.

There is no obligation to answer all or any of these questions. If you would prefer to submit an overall comment, please go straight to the last question.

1. The exhibition	<i>Please tick</i>	
Where did you find out about the exhibition?	Advert <input type="checkbox"/>	Website <input type="checkbox"/>
	Letter <input type="checkbox"/>	Other <input type="checkbox"/>
Were you already aware of the consented Cloich Forest Wind Farm	Yes <input type="checkbox"/>	No <input type="checkbox"/>
Has the exhibition been useful	Yes <input type="checkbox"/>	No <input type="checkbox"/>
If not please explain why?		
2. About yourself	<i>Please tick</i>	
Are you a local resident or visitor to the area?	Resident <input type="checkbox"/>	Visitor <input type="checkbox"/>
If you're a resident please provide your postcode:		
Are you here as a representative of any organisation or group?	Yes <input type="checkbox"/>	No <input type="checkbox"/>
If so, which organisation?		
How old are you? (Optional)	Under 20 <input type="checkbox"/>	40-49 <input type="checkbox"/>
	20-29 <input type="checkbox"/>	50-59 <input type="checkbox"/>
	30-39 <input type="checkbox"/>	60+ <input type="checkbox"/>

3. The project	Yes	No	Unsure
Are you concerned about the potential effects of climate change?	<input type="checkbox"/>	<input type="checkbox"/>	<input type="checkbox"/>
Do you support the generation of renewable energy in Scotland?	<input type="checkbox"/>	<input type="checkbox"/>	<input type="checkbox"/>
Do you support the development of onshore wind farms in Scotland?	<input type="checkbox"/>	<input type="checkbox"/>	<input type="checkbox"/>
Are you supportive of the new proposal?	<input type="checkbox"/>	<input type="checkbox"/>	<input type="checkbox"/>

4. Do you have any views on the proposal to develop a new farm based on fewer but higher turbines to make them more productive?

5. If you were aware of the consented wind farm, have the proposed revisions changed your views in any way?

If you would like to receive any further announcements or information on the wind farm proposal, please provide your preferred contact details below:

E mail address.....

Name.....

Address.....

.....

Postcode.....

(Your name and address is optional but is requested to support your comments)

Thank you very much for agreeing to participate in this survey. Your personal details are not placed on the public record and will be held securely by MHW PR and EDF Energy Renewables in accordance with the GDPR 2016/679 data protection provisions. Information provided here will be used solely in connection with the consultation process and any subsequent planning application.

Cloich Forest Wind Farm

Feedback on the new proposal

The survey will take approximately 5 minutes to complete.

EDF Renewables would like to hear your views on the Cloich Forest Wind Farm proposal. There is no obligation to answer all or any of these questions. If you would prefer to submit an overall comment, please go straight to the last question.

1. If you are a local resident, please provide your postcode below:

2. If you are not a local resident, please provide some details of your interest in the project below:

3. Where did you find out about this wind farm virtual exhibition? (please select from drop-down list):

- Leaflet in post
- Newspaper advertising
- Word of mouth
- Project website
- Social media

Other

4. Overall, has the online exhibition been useful and informative?

Yes

No

5. If not please tell us why and what we can do better at future exhibitions?

6. Do you have any views on the new proposal – either on the reduction of the number of turbines or any increase in the height of the turbines to make them more productive?

7. Have the proposed changes to the wind farm changed your opinion of the project in any way?

8. Do you have any questions on the community benefit fund? Would you be interested in the opportunity for community/shared ownership in the wind farm?

9. Overall, what are your views on the proposal:

I am in favour

I am not in favour

I am undecided

10. Do you have any further comments or questions in relation to the wind farm proposal?

Your contact details


Providing your name and address below is optional.

Providing an email address or phone number will enable us to answer any questions you may have.

Your personal details are not placed on the public record and will be held securely by Mitchell Halton Watson and EDF Renewables solely for the purposes of gathering local feedback on the proposal and/or answering any questions you may have on the project.

11. Please provide your contact details here if you require any further details on the project:

This content is neither created nor endorsed by Microsoft. The data you submit will be sent to the form owner.

 Microsoft Forms

CLOICH FOREST WIND FARM

EDF RENEWABLES

EDF Renewables UK and Ireland is a joint venture between two companies, EDF Energy (EDF's UK business) and EDF Renewables Group (EDF's global renewables business).

EDF Renewables Group has more than 25 years' of experience in delivering renewable energy projects in more than 20 countries around the world.

EDF Renewables UK and Ireland has an operating portfolio of 37 wind farms and one of the UK's largest battery storage units (together totalling almost 1GW) and we are providing some of the much needed new affordable, low carbon electricity across all technologies.

We have offices in Edinburgh, Durham, London and Dublin.

FORESTRY AND LAND SCOTLAND

The proposed Cloich Forest Wind Farm development is on the national forests and land managed by Forestry and Land Scotland (FLS) on behalf of Scottish Ministers. EDF Renewables and FLS are working together to ensure the best outcome for the proposed development.

The Scottish Government continues to support generation of electricity from renewable sources as part of its strategy for improving sustainability, benefiting communities, reducing the effects of climate change.

More details at www.forestryandland.gov.scot



PRIVACY NOTICE

EDF Energy Renewables Limited is committed to protecting the privacy and security of your personal information. If you register an interest in community ownership, this privacy notice explains how we will use your personal information.

EDF Energy Renewables Limited ("we" or "us") is a "data controller". This means that we are responsible for deciding how we hold and use personal information about you. We are required under data protection legislation to notify you of the information contained in this privacy notice. EDF Energy Renewables Limited is a company based in the United Kingdom. We may update this notice at any time but if we change anything important about it (e.g. the information we collect, how we use it or why) we will highlight those changes to you as soon as reasonably practical.

We are working with a company called Mitchell Halton Watson Ltd ("MHW") who may assist us with the collection and processing of your personal data. If instructed, MHW will be the "data processor". This means that MHW acts on behalf of, and only on the instructions of, us as the relevant "data controller" for the purposes of this processing of your personal information.

We will collect your personal data directly from you, on a voluntary basis, via any response to this leaflet. This privacy notice explains how we use the personal data collected. The lawful basis for this is legitimate interests (community feedback and engagement on the project is vital to inform project development).

We collect personal identification information (your name, contact number, address, email address). We are collecting this data for the following purposes:

- offering shared ownership to communities in new wind farms is being promoted by the Scottish Government and may become a requirement. To comply we must publicise the opportunity and explore potential interest among members of the public and community organisations;
- to help us respond to comments and questions and inform project planning & development decisions.

We securely store your data at our locations in the UK and take measures to secure your personal data, including encryption systems on laptops, firewalls and antivirus software. We would like to make sure you are fully aware of all your data protection rights. You are entitled to the following:

- You can ask us to confirm if we are processing your information;
- You can ask us to restrict how we use your information;
- You can ask us to help you move your information to other companies;
- You can ask to correct your information if it's wrong;
- You can ask us to stop using your personal information, but only in certain cases;
- You can ask us to delete your information;
- You have the right to complain to the relevant supervisory authority.
- You have a right to be forgotten and you can ask that our systems stop using your information;

If you make a request, we have one month to respond to you. If you would like to exercise any of these rights, please contact us at info@edf-re.uk. If you want to get in touch about our use of your personal data please contact us at Data Protection Officer: dpo@edfenergy.com or at 90 Whitfield Street, London W1T 4EZ. We will store your personal data until October 2021. You can contact us to ask us to correct or receive a copy of your personal data that we hold. If you would like, you can ask us to delete your personal data at any time by contacting Data Protection Officer: dpo@edfenergy.com or at 90 Whitfield Street, London W1T 4EZ (but in which case we may wish to collect it again and contact you for these purposes again).



www.edf-re.uk

* Load factors based on the five year rolling averages on unchanged configuration basis using Table 6.5d of Digest of UK Energy Statistics – latest figures as per July 2019 release

EDF Energy Renewable Limited, Registered No 064566 EDF Renewables, Atria One, 144 Morrison Street, Edinburgh EH3 8EX



EDF Renewables
Atria One
144 Morrison Street
Edinburgh
EH3 8EX

16th April 2021

Dear Community Group

Cloich Forest Wind Farm Community Ownership Opportunity

Last year, EDF Renewables held a series of public consultation events to update residents and other key stakeholders on plans for the proposed Cloich Forest Wind Farm, located on the commercial forestry site managed by Forestry and Land Scotland (FLS), west of the village of Eddleston in the Scottish Borders.

Further details on the project will be provided in an online exhibition to be available from 16th to 26th April, and as part of the proposal EDF Renewables would like to gauge any interest there may be in shared ownership relating to the proposed new wind farm among local stakeholders and community organisations.

The Scottish Government has set targets for community investment in onshore wind and the project landowner, FLS, is an Agency of the Scottish Government. EDF Renewables supports the principles of community ownership and, on completion of the wind farm, there will be an opportunity for the local community and FLS to own up to 25% of the wind farm.

This means that if the wind farm is built, local community groups would have an opportunity to invest in the wind farm and share any profit generated.

Any community decision on shared ownership, and how it would work in practice for the Cloich Forest project, would take place after the wind farm has been built.

At this stage, therefore, we are simply alerting local groups to this opportunity and exploring any potential interest there may be. As part of this approach we would welcome any feedback, comment or questions from local community organisations.

I should also point out that impartial and independent advice on community ownership is also available from Local Energy Scotland at www.localenergy.scot.

In the meantime, if you have any specific questions relating to shared ownership and the proposed Cloich Forest Wind Farm, please do not hesitate to contact me via the details provided below.

Yours sincerely

Richard Fisher
Onshore Wind Development Manager

Richard.Fisher@edf-re.uk

EDF Renewables Community Investment Limited is an Appointed Representative of Resolution Compliance Limited, which is authorised and regulated by the Financial Conduct Authority under reference number 574048



CLOICH FOREST WIND FARM COMMUNITY OWNERSHIP

What is community ownership?

Community (also sometimes called 'Shared') ownership offers the opportunity for local community groups and organisations to invest in and share in any profit generated by a privately owned renewable energy project such as a wind farm.

EDF Renewables is committed to providing a community ownership opportunity to suitable organisations within the locality to invest in the proposed Cloich Forest Wind Farm.

Why is it being made available?

The Scottish Government has set targets for community investment in onshore wind. The project landowner, Forestry and Land Scotland (FLS), is an Agency of the Scottish Government and, as such, the lease agreement with EDF Renewables has an option for the local communities and FLS to purchase up to 25% in the Cloich Forest Wind Farm Special Purpose Vehicle (SPV) – the company that will operate the wind farm.

How would community ownership work?

In broad terms, qualifying community organisations would be able to invest in the wind farm and share in any profit generated by it. Essentially, in return for an upfront payment to the SPV, participating community bodies would be entitled to receive regular payments equal to an agreed percentage (the "Community Percentage") of the net profits of the wind farm.

Any community decision to invest is made only after the project has been built. This enables the community to avoid taking planning or construction risk but still invest at cost.

What proportion of the wind farm is available?

The maximum aggregate of all community percentages of all participating community bodies, including FLS, would be twenty five per cent (25%).

How would different community groups be represented?

We require that there would be a single community body that would receive a share of the profits from the project.

This body' would be a new entity that would be formed to collectively represent the participating individual community groups or organisations.

How would this affect any community benefit fund?

It is important to point out that if the proposed wind farm is consented and built, the community ownership opportunity would be completely separate from the community benefit fund. Whatever response there is to the shared ownership opportunity, it is still proposed that a community benefit fund will be put in place by EDF Renewables at the prevailing Scottish Government rate, currently £5,000 per MW installed.

What is Scottish planning policy on this issue?

The Scottish Government supports the principles of shared ownership in renewable energy projects, as set out in its Energy Strategy published in December 2017. The strategy sets a challenge to the renewables industry to make Scotland the first area in the UK to host commercial onshore wind development without subsidy. EDF Renewables is committed to pursuing this challenge.

The Government's Community and Renewable Energy Scheme (CARES), which is delivered by Local Energy Scotland, was established in 2011 to encourage local and community ownership of renewable energy across Scotland and has been supporting local energy ever since.

Further advice for community groups

Local Energy Scotland provides free advice on this issue and on the potential sources of capital funds available to community organisations. Grants are also available through the CARES scheme to allow local communities to receive professional advice from chartered accountants, solicitors and independent financial advisors.

THE CLOICH FOREST WIND FARM PROPOSAL

Final Proposed Layout



April 2021

EDF Renewables acquired the Cloich Forest project from PfR in 2017. Since taking over responsibility for the project, EDF Renewables has been reassessing the project to increase productivity from the site by reducing the number of turbines and increasing their height. After reviewing feedback to an initial revised proposal, EDF Renewables has now developed an updated layout proposal. The proposed layout comprises:

- A reduction in the number of turbines on the site from 18 to 12
- An increase in the maximum height to rotor blade tips of 149.9m
- A generation capacity of around 58MW
- Changing the location of all turbines and increasing the spacing between them to create a more balanced array of turbines from key viewpoints

The proposed wind farm would produce enough low carbon electricity to meet the average annual domestic needs of around 34,000 homes each year* and will make a substantial contribution to reducing CO₂ emissions.

An Environmental Impact Assessment (EIA) will accompany the Section 36 planning application for the wind farm.

Plans for the development of the original Cloich Forest Wind Farm were consented by the Scottish Government in July 2016 following a submission by the previous owners, Partnership for Renewables (PfR). The original scheme comprised 18 turbines at heights of 115m to rotor blade tips.

Because the development will be over 50MW, the wind farm will be classed as a Section 36 scheme and will require the submission of an application to the Scottish Government's Energy Consents Unit (ECU). We anticipate that an application will be made to the ECU at the end of May 2021.

What are the next steps?

If you are interested in exploring shared ownership in the Cloich Forest Wind Farm, we would be grateful if you would let us know via email to Richard.Fisher@edf-re.uk

At this stage we are simply trying to alert local community organisations and development trusts about the potential community ownership opportunity provided by the proposed Cloich Forest Wind Farm.

Although decisions can only be made once the project has been granted planning permission, at the appropriate time we can set up a Memorandum of Understanding with interested groups to discuss in good faith the proposed community ownership structure.

Notifying us of an interest in community ownership will enable us to keep you informed of progress and provide further information when appropriate.