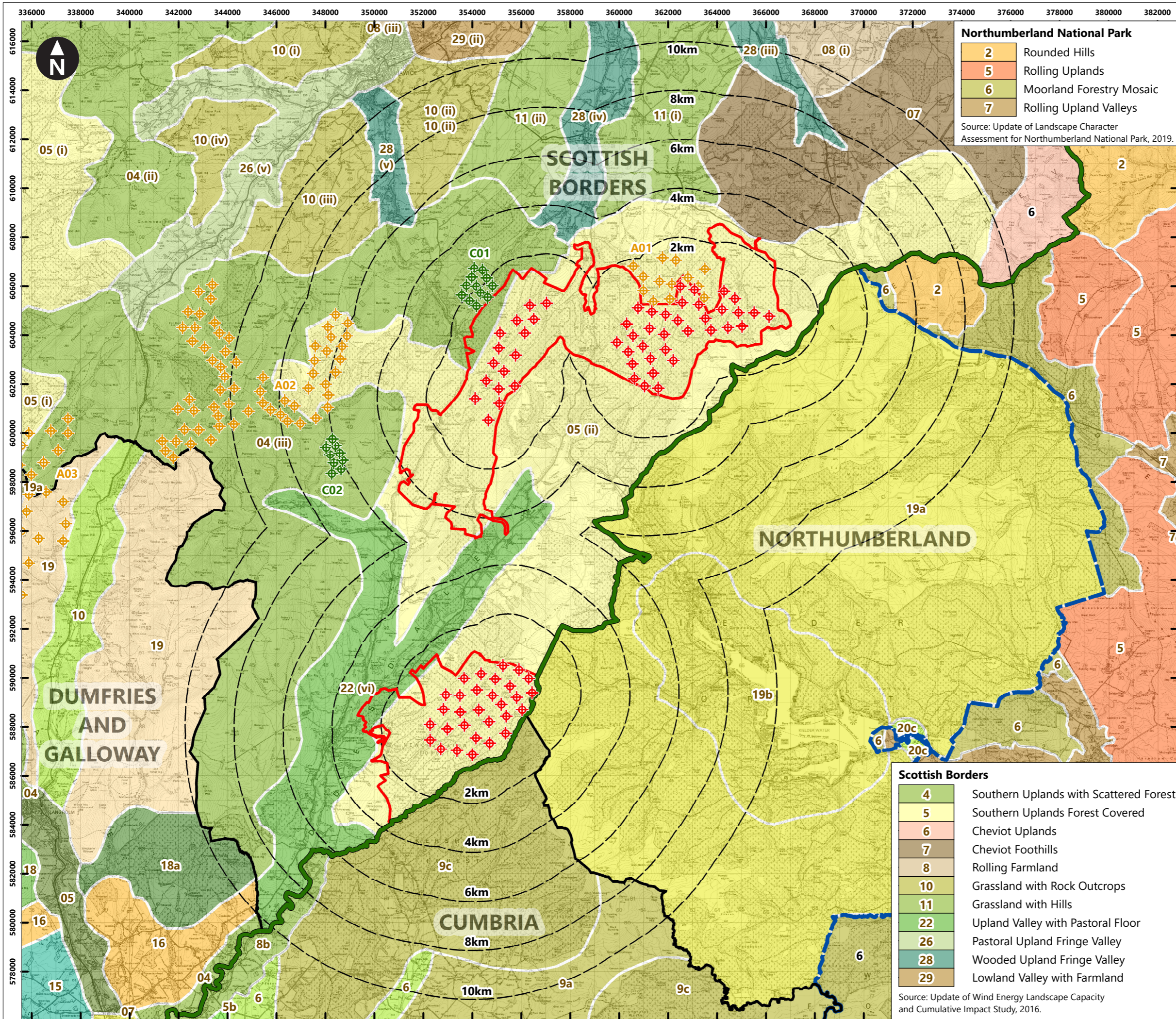


C:\Users\craig.wilson\OneDrive - WSP\O365\ArcGIS\Liddesdale\ArcGIS\MXD\2023-05 Scoping\Figure 5.2a A3 LCA 62282673-WSP-FG-SA-00003_R7.mxd Originator: wilsc03



Northumberland National Park

2	Rounded Hills
5	Rolling Uplands
6	Moorland Forestry Mosaic
7	Rolling Upland Valleys

Source: Update of Landscape Character Assessment for Northumberland National Park, 2019.

Key

- Indicative turbine locations
- Local authority boundaries
- Lines indicating the distance from the indicative turbine locations
- Scotland / England Border
- Site Boundary
- Consented Wind Farms
- Application Wind Farms
- Northumberland National Park

C01) Pines Burn C02) Windy Edge
A01) Millmoor Rig A02) Teviot A03) Faw Side

Landscape Character Northumberland

19	Moorland and Forest Mosaic
20	Rolling Upland Valleys

Source: Northumberland Landscape Character Assessment, 2010.

Cumbria

5	Lowland
6	Intermediate Farmland
8	Main Valleys
9	Intermediate Moorland Plateau

Source: Cumbria Landscape Character Guidance & Toolkit, 2011.

Dumfries and Galloway

4	Narrow Wooded River Valleys
5	Intimate Pastoral Valley
7	Middle Dale
10	Upland Glens
15	Flow Plateau
16	Upland Fringe
18	Foothills
19	Southern Uplands

Source: LDP SPG Wind Energy Development Landscape Capacity Study, 2017.

Scottish Borders

4	Southern Uplands with Scattered Forest
5	Southern Uplands Forest Covered
6	Cheviot Uplands
7	Cheviot Foothills
8	Rolling Farmland
10	Grassland with Rock Outcrops
11	Grassland with Hills
22	Upland Valley with Pastoral Floor
26	Pastoral Upland Fringe Valley
28	Wooded Upland Fringe Valley
29	Lowland Valley with Farmland

Source: Update of Wind Energy Landscape Capacity and Cumulative Impact Study, 2016.

0 1 2 3 4 5 6 7 8 km
Scale at A3: 1:150,000
© Crown Copyright. All rights reserved. Licence number AL100001776.

Client

Figure 5.2a
Landscape Character within 10km